

THE GEHRY LOUNGE

LOWER GROUND FLOOR

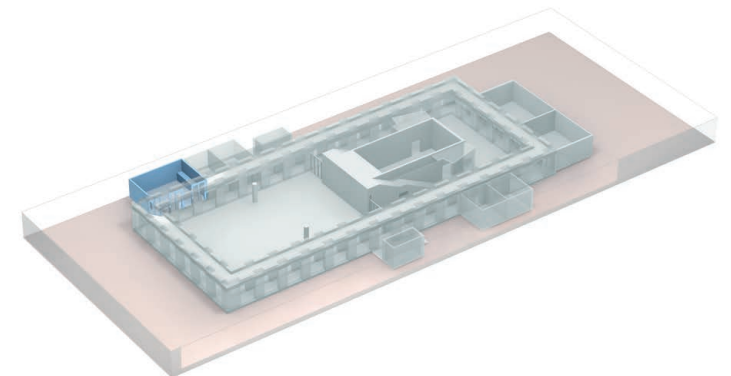


EVENT TYPE

- » cocktail bar & lounge
- » receptions
- » coffee breaks
- » VIP lounge

INTERIOR & FURNISHING

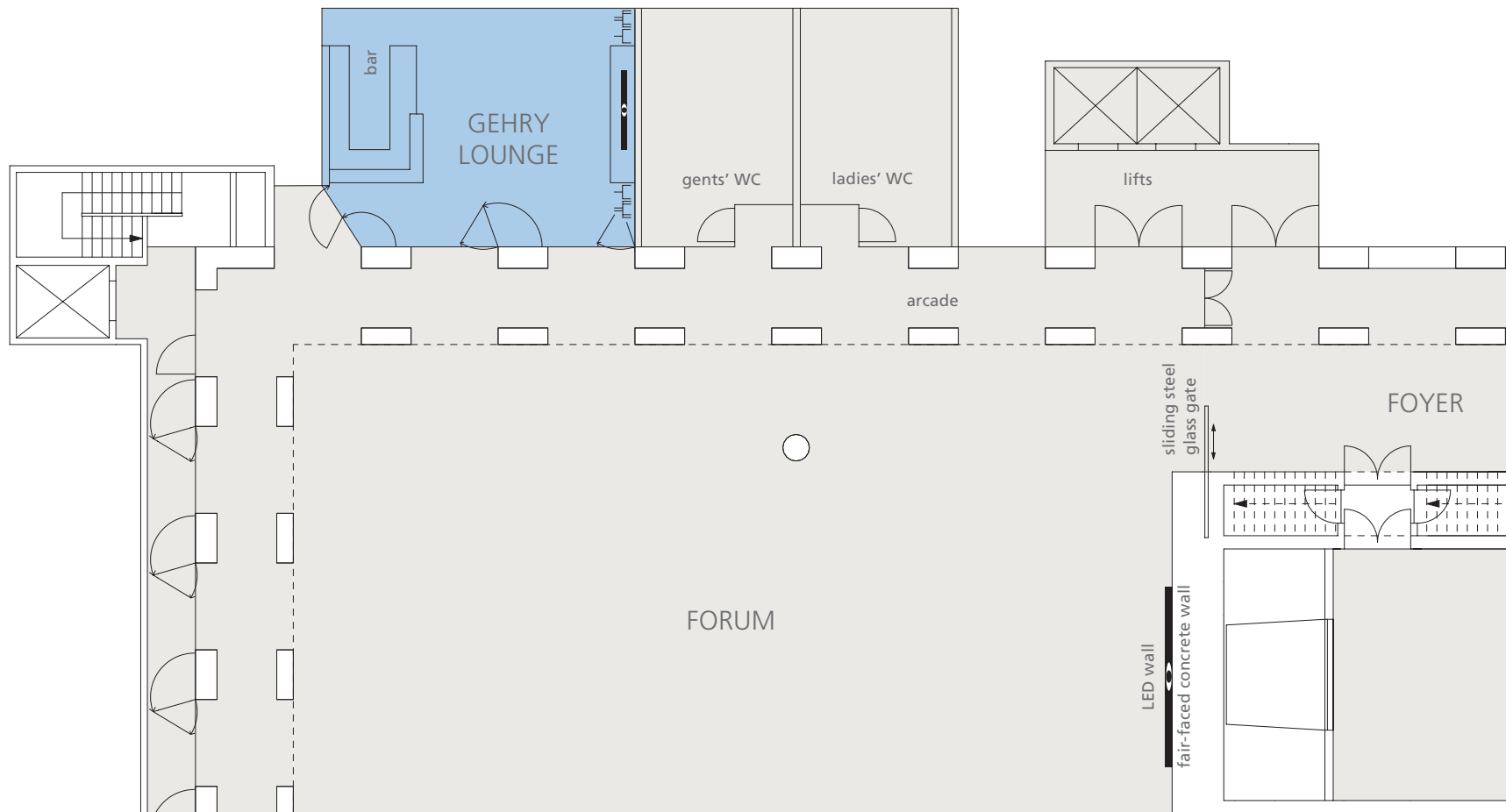
- » wooden seating designed by Frank O. Gehry
- » fitted coffee and cocktail bar
- » parquet floor
- » LED screen 58"
- » access to Wi-Fi










THE GEHRY LOUNGE LOWER GROUND FLOOR

M 1:200



-  power point
-  3-phase power point
-  LED screen 58"

DIMENSIONS	
total area	70 m ²
length	9,20 m
width	7,10 m
height	4,50 m

SEATING CAPACITY		
café seating		35 delegates
reception		35 delegates