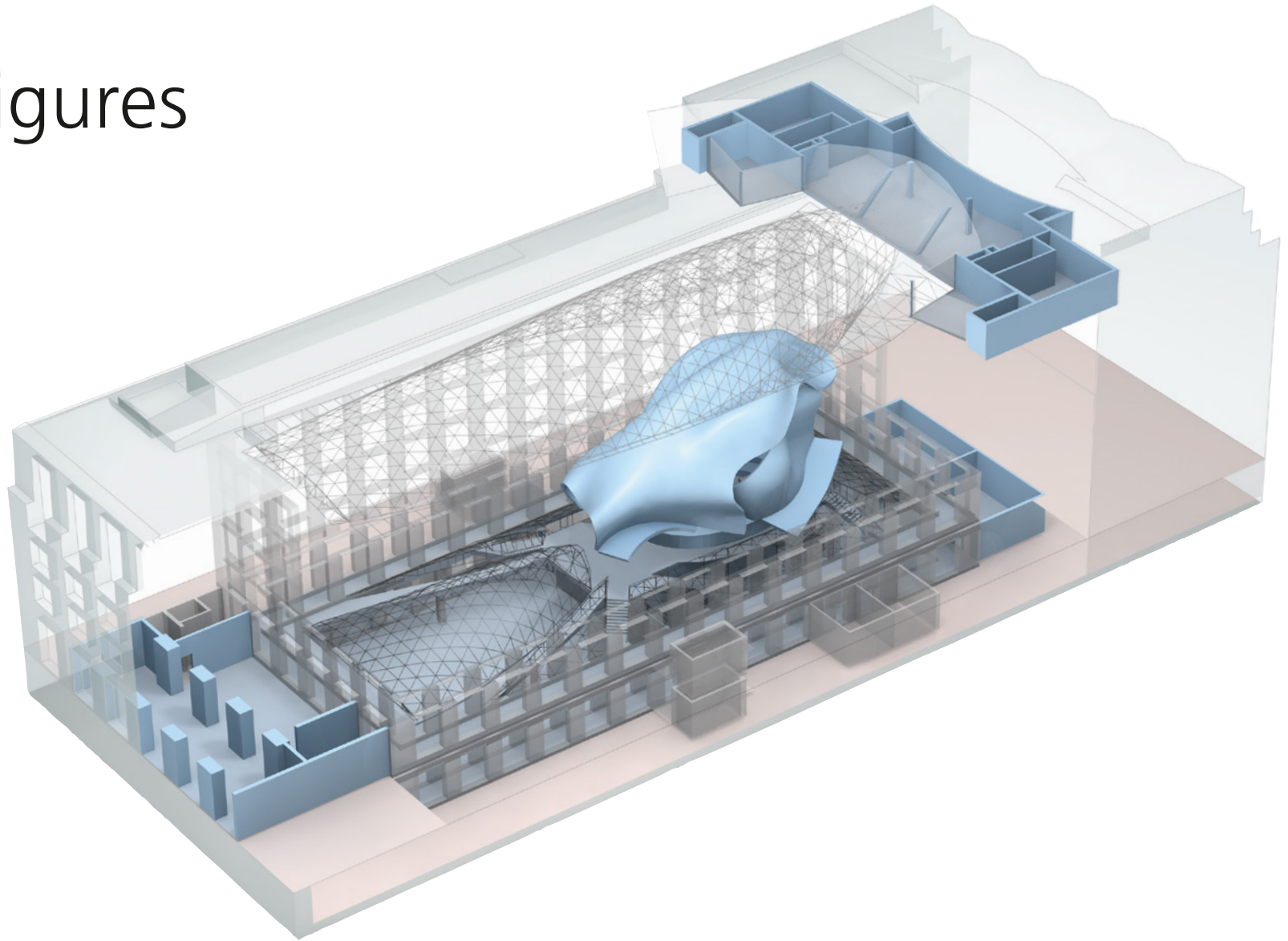


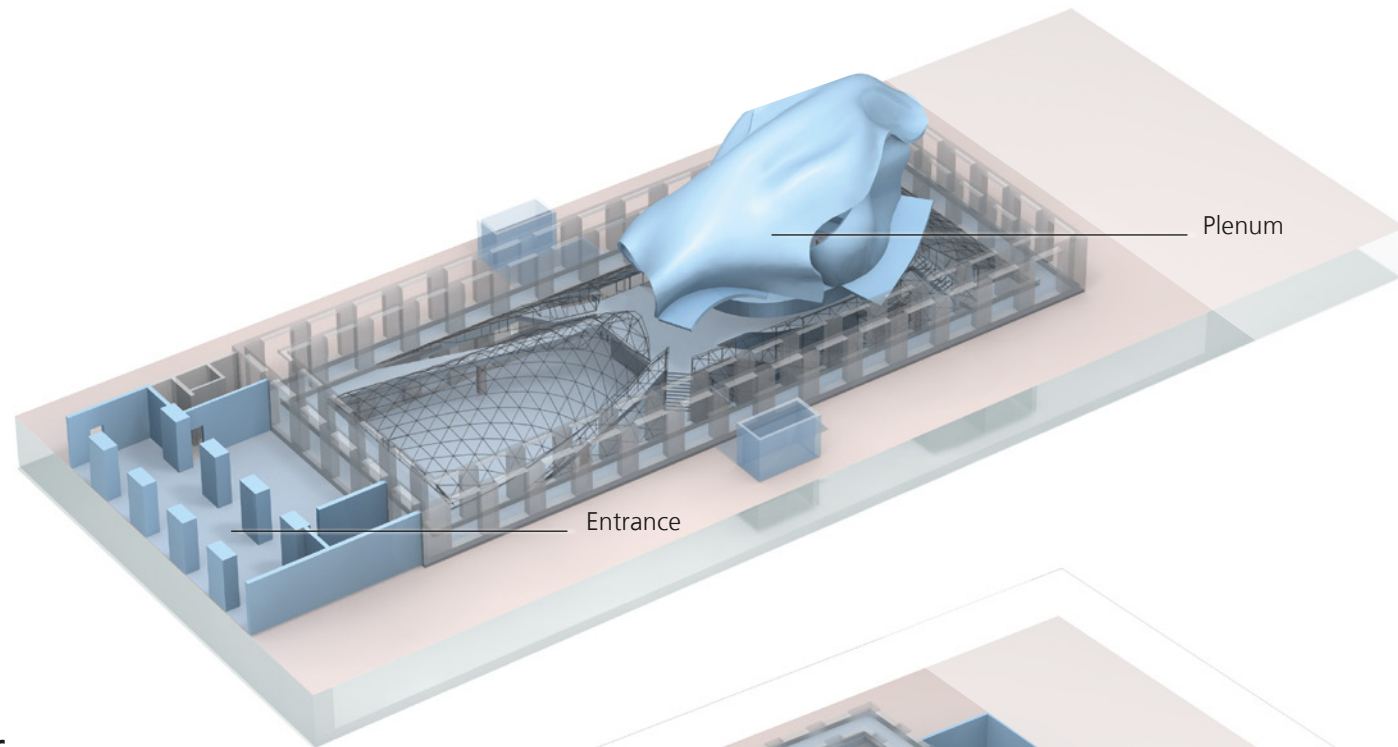
# Facts & Figures

Event Planner

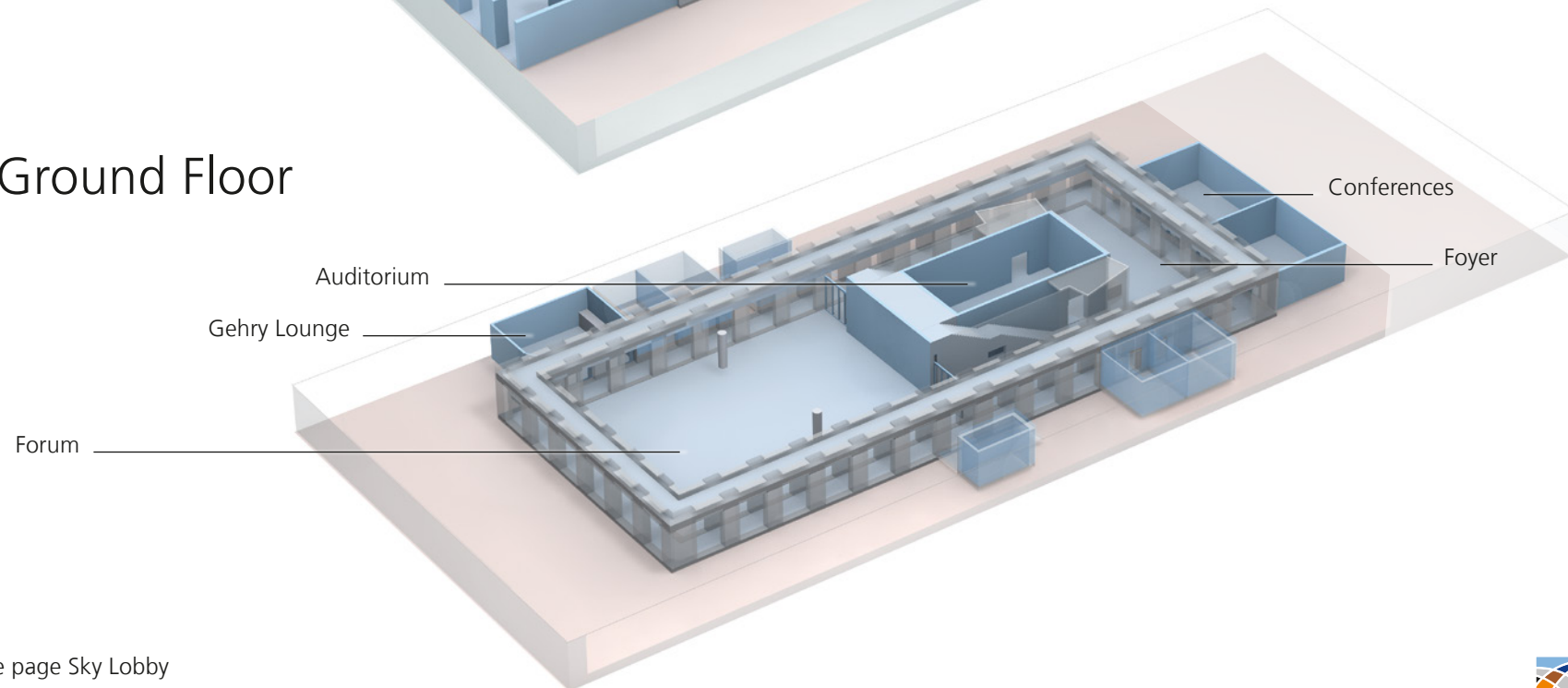


Here you will find all the details necessary for planning your event: floor plans, technical data and information on room design, capacities and services available at AXICA.

## Ground Floor



## Lower Ground Floor



Top Floor » see page Sky Lobby  
First Floor » see page First Floor

# Capacities Overview

SPACES	AREA	FLOOR	CLASSROOM 	THEATRE 	BANQUET 	RECEPTION 	BOARDROOM 
PLENUM	188 m²	GF	74 delegates	80 delegates	-	-	20 delegates
FORUM	530 m²	LG	250 delegates	500 delegates	350 delegates	500 delegates	-
FOYER	200 m²	LG	-	84 delegates	80 delegates	250 delegates	-
GEHRY LOUNGE	70 m²	LG	-	50 delegates	36 delegates	50 delegates	20 delegates
AUDITORIUM 1 & 2*	107 m²	LG	60 delegates	100 delegates	-	-	30 delegates
CONFERENCES 1 & 2*	68 m²	LG	30 delegates	55 delegates	-	-	25 delegates
CONFERENCES 3 & 4*	55 m²	LG	24 delegates	40 delegates	-	-	20 delegates
QUADRIGA	65 m²	1st Floor	-	45 delegates	36 delegates	40 delegates	26 delegates
CONFERENCES 5 & 6*	86 m²	1st Floor	28 delegates	70 delegates	-	-	30 delegates
CONFERENCES 7 & 8**	32 m²	1st Floor	-	20 delegates	-	-	12 delegates
SKY LOBBY	204 m²	Top Floor	40 delegates	80 delegates	50 delegates	80 delegates	-
SKY LOUNGES**	46 m²	Top Floor	-	25 delegates	12 delegates	20 delegates	18 delegates

\* flexible partitioning \*\* separately only

## Interior & Furnishing

- » fully air-conditioned rooms
- » double glass roof allows natural lighting on all floors
- » colour: red carpet, parquet flooring in arcades and Plenum, pine wall panels
- » white lighting, partly dimmable
- » designer furniture
- » fitted bar in the Gehry Lounge
- » Facilities accessible for people with disabilities
- » green electricity

## Technology & Equipment

- » power points
- » technical cooperation with event production experts
- » goods lift (1.40 x 2.50 x 2.40 m high), capacity 27 (maximum load 2,500 kg), space between opened doors 1.39 m
- » separate delivery area (4.50 m wide x 3.00 m high), maximum load 3,500 kg
- » Wi-Fi

## Services

- » in-house catering and service team
- » cooperation for equipment, decoration, photography, guest management and entertainment
- » in-house security team
- » hostesses (cloakroom service and admission)

We are happy to supply other services on request.

#### Adress

---

AXICA  
Kongress-und Tagungszentrum GmbH  
Pariser Platz 3 / D-10117 Berlin  
Fon +49 30 200086-0

info@axica.de  
www.axica.de

#### Delivery area / Delivery address

---

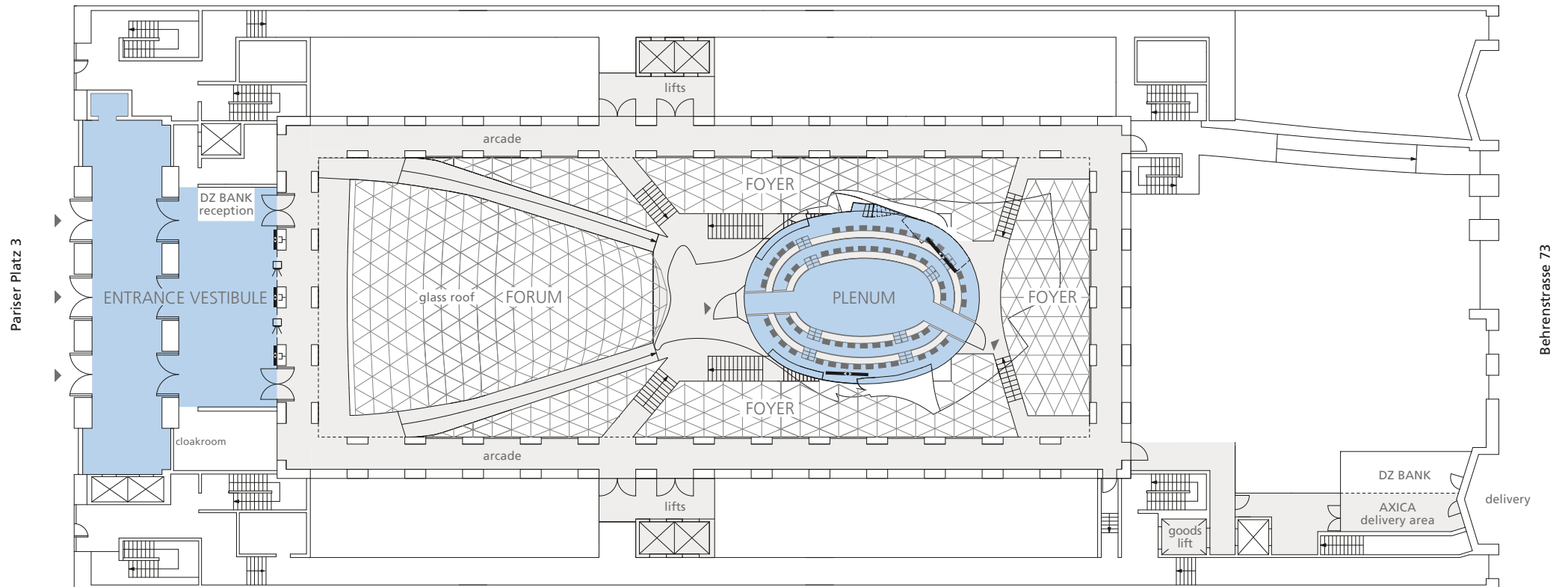
AXICA  
Behrenstrasse 73 / D-10117 Berlin  
Note: DZ BANK building / delivery gate / bell on the left



# Ground Floor

M 1:400

10 5 2,5 1 0,5

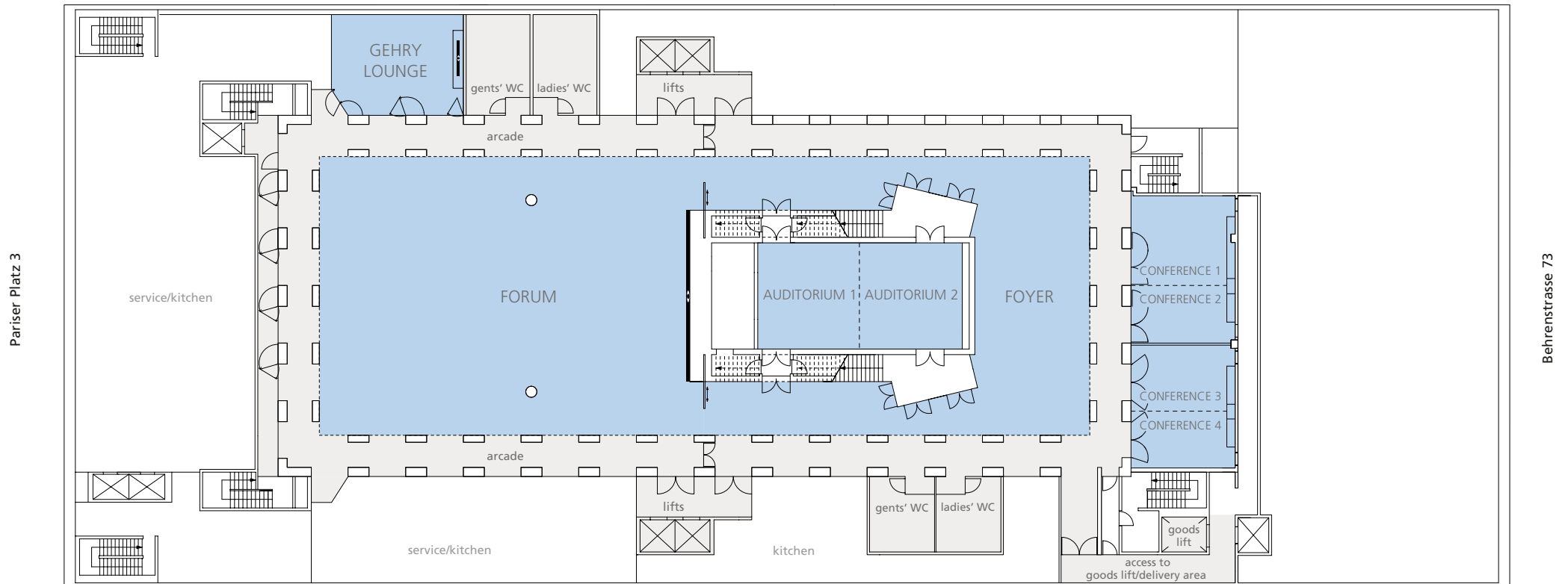




# Lower Ground Floor

M 1:400

10 5 2,5 1 0,5





# The Entrance Vestibule

Ground Floor



## Event type

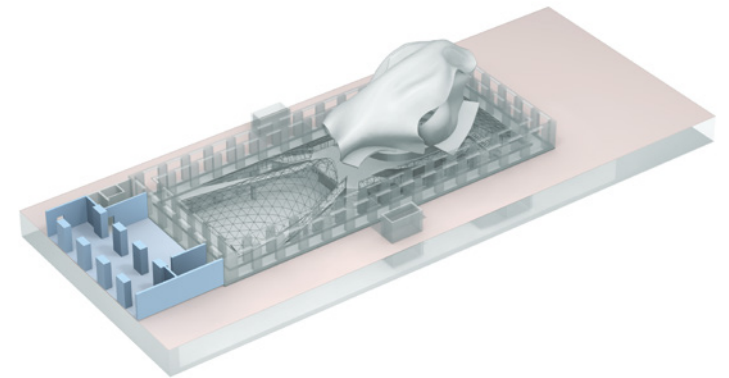
- » accreditation
- » cloakroom

## Interior & Furnishing

- » Italian limestone façade
- » large steel glass doors
- » granite floor
- » access to Wi-Fi

## Equipment & Service

- » 3 LCD screens 55"
- » signage system
- » hostess and cloakroom service
- » in-house security
- » Wi-Fi





# The Entrance Vestibule Ground Floor

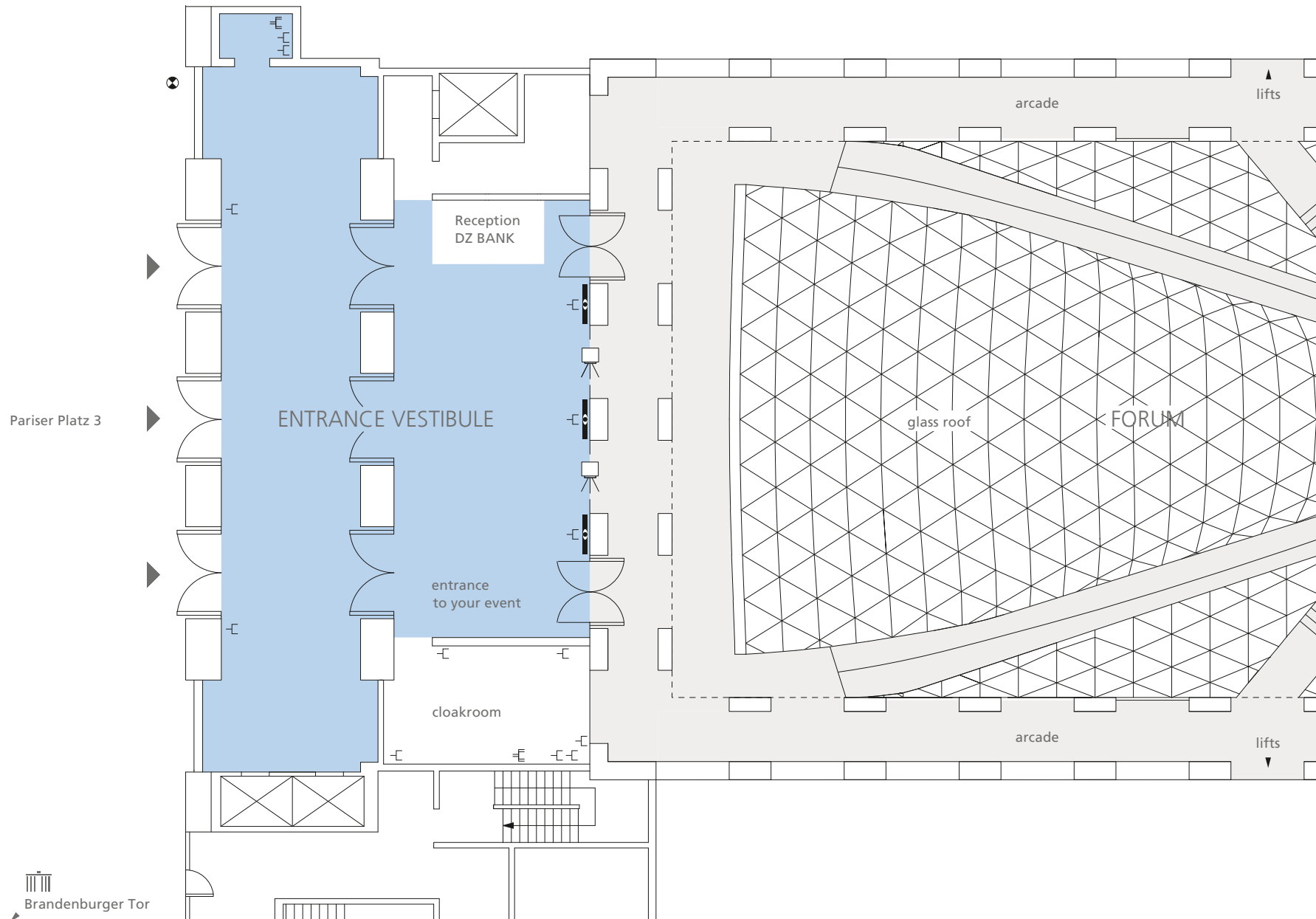
M 1:200

10

5

2,5

1 0,5



	TV and audio broadcasting system and floor cabling with data lines
	power point
	3-phase power point
	LCD screen 55"



# The Plenum

Ground Floor



## Event type

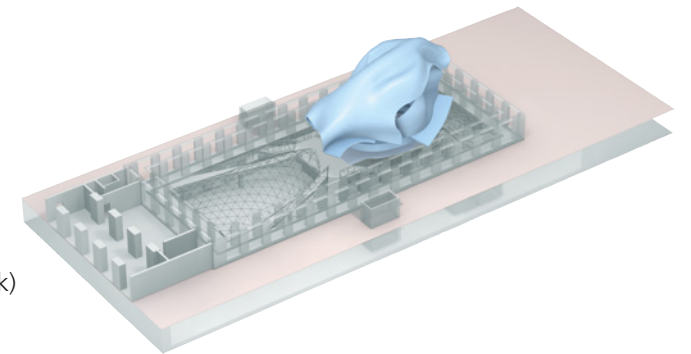
- » press conferences
- » workshops
- » meetings
- » lectures
- » plenary sessions
- » product presentations
- » podium discussions

## Interior & Furnishing

- » optional podium area
- » variable speaker positioning
- » flexible seating on the parquet
- » boardroom table
- » flexible seating within the rows
- » sound-proofed wall panels
- » direct daylight

## Technology & Equipment

- » Sound system with electronic beam steering, 8 wireless microphone channels
- » Digital desktop intercom stations with voting function
- » Digital sound control, extensive video routing
- » display 110" & LED-Wall 135"
- » portable 40" preview monitors
- » extensive infrastructure (optical fibre, and network)
- » dedicated 100Mbit/s network cable connected
- » Wi-Fi





# The Plenum Ground Floor

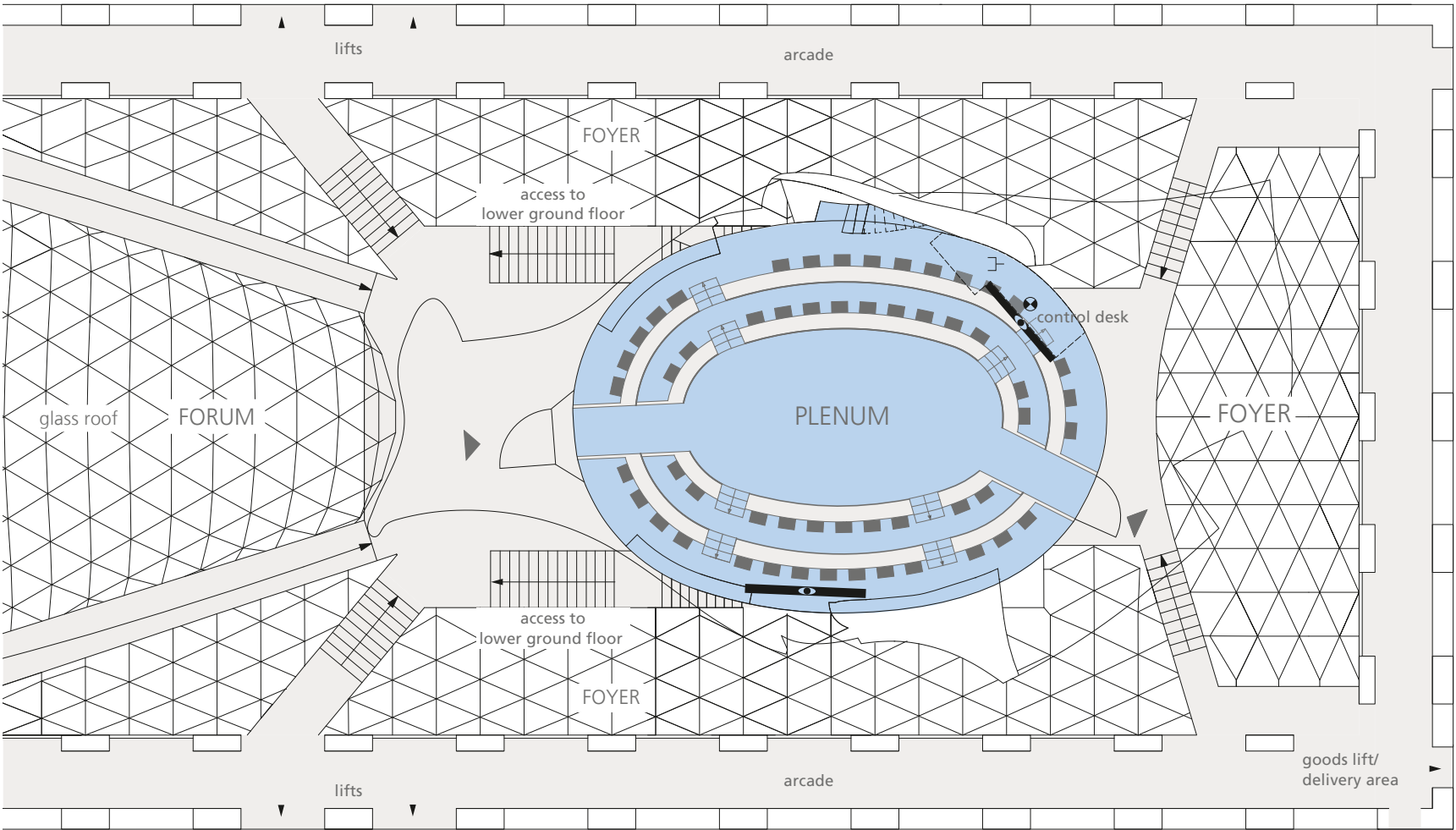
M 1:200




10

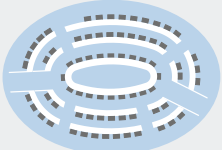
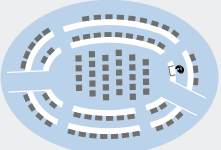
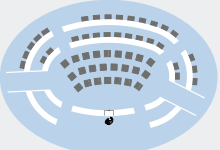
5

2,5

1 0,5



-  access channels to tv and audio transmission
-  power point
-  Display 110" LED-Wall 135"

DIMENSIONS		SEATING CAPACITY BOARDROOM		THEATRE		PODIUM	
Area	188 m²		maximum 74 delegates parquet 20 delegates seating rows 54 delegates		maximum 80 delegates parquet 28 delegates seating rows 52 delegates		maximum 54 delegates parquet 24 delegates seating rows 30 delegates



# The Forum

Lower Ground Floor



## Event type

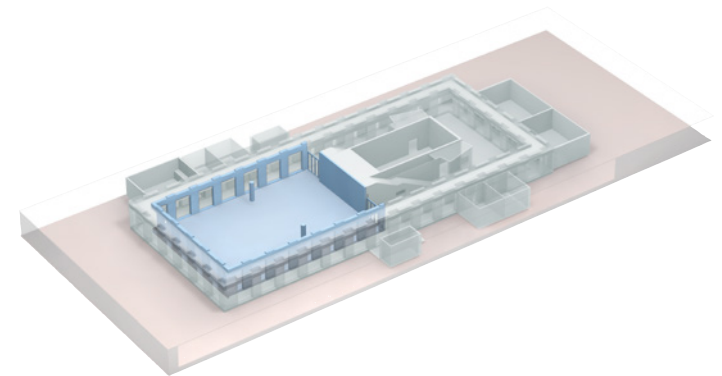
- » receptions
- » gala dinners
- » congresses
- » symposia
- » conferences
- » meetings
- » presentations
- » exhibitions
- » fashion shows
- » concerts

## Interior & Furnishing

- » direct daylight, glass roof
- » red carpet
- » glass art installation
- » access to Foyer and Gehry Lounge
- » designer furniture

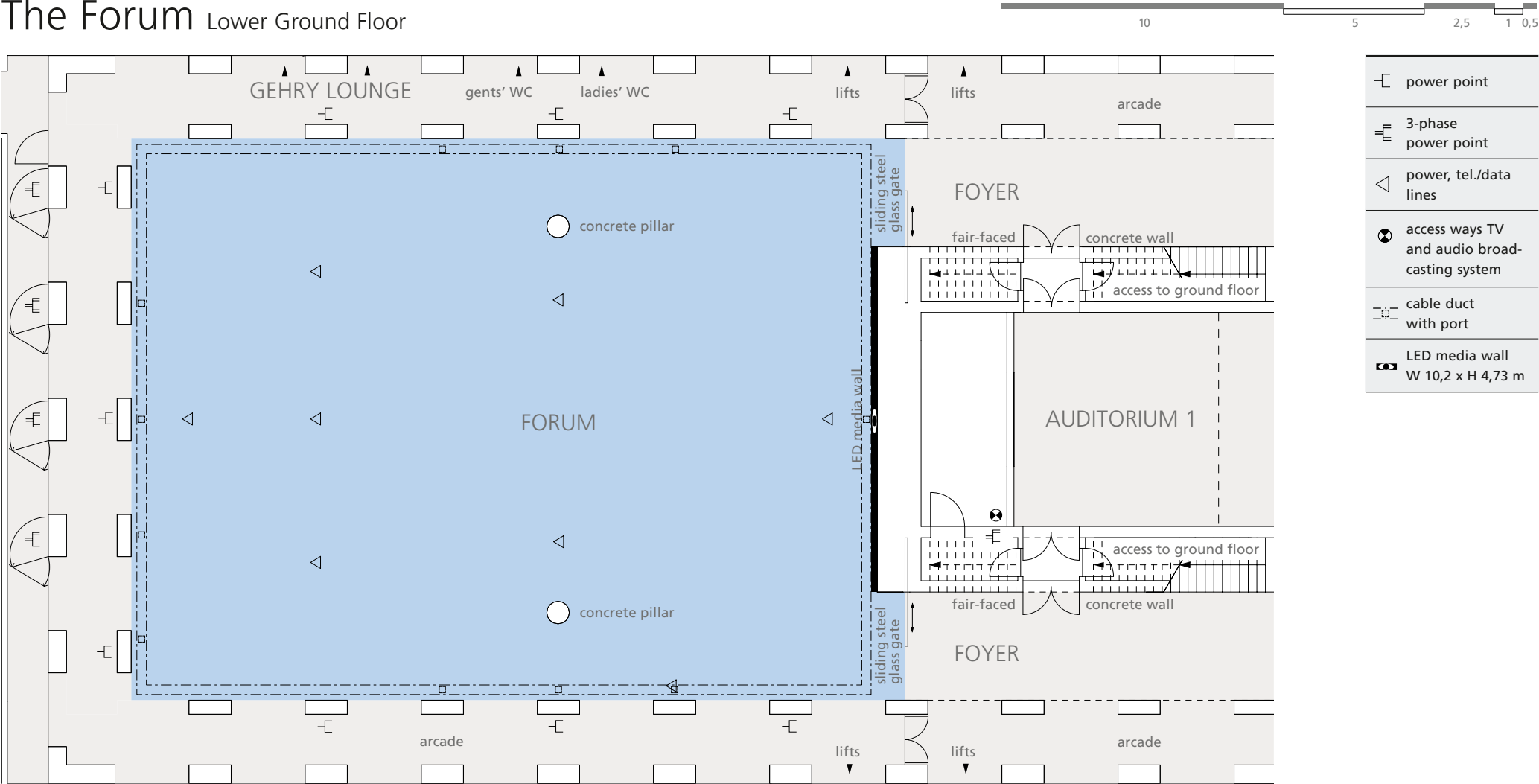
## Technology & Equipment

- » LED media wall (W 10,20 m x H 4,73 m / resolution 5.770 px x 2.520 px)
- » PA system Kling & Freitag
- » technical cooperation with event production experts
- » dimmable lighting
- » TV frequency links
- » invisible cable duct integrated in the floor
- » Soil load capacity: 5 kN/m<sup>2</sup> (500 kg/m<sup>2</sup>)
- » power points
- » Wi-Fi





# The Forum Lower Ground Floor



DIMENSIONS	
total area	530 m²
length	26,50 m
width	20,00 m
height	3,32 m – 5,58 m

SEATING CAPACITY		including podium (10 x 3 m)	
classroom		250 delegates	250 delegates
theatre		500 delegates	500 delegates
banquet		350 delegates	320 delegates
reception		500 delegates	500 delegates

# The Foyer

Lower Ground Floor



## Event type

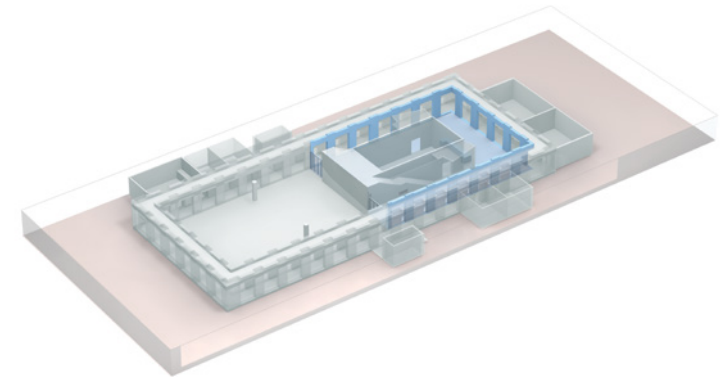
- » receptions
- » coffee breaks
- » exhibitions & product presentations
- » cocktail bar & lounge
- » dinner & meetings

## Interior & Furnishing

- » direct daylight
- » red carpet
- » arcade
- » access to all spaces in the basement
- » flexible beverage bar

## Technology & Equipment

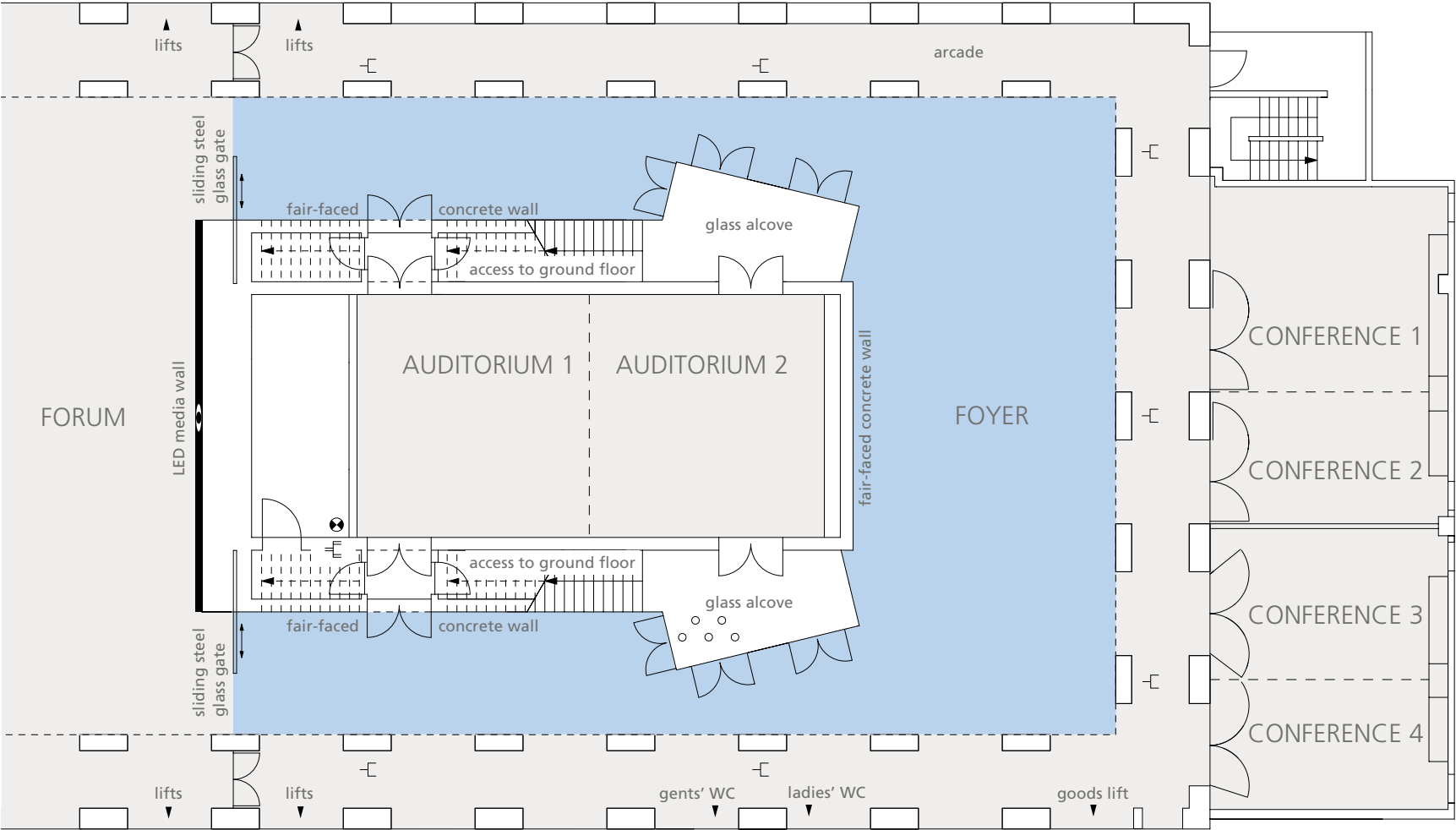
- » PA system Kling & Freitag
- » Dimmable lighting
- » Soil load capacity: 5 kN/m<sup>2</sup> (500 kg/m<sup>2</sup>)
- » Wi-Fi





# The Foyer Lower Ground Floor

M 1:200



	power point
	3-phase power point
	access ways TV and audio broadcasting system

DIMENSIONS		SEATING CAPACITY			
total area	200 m²	reception/buffet	250 delegates	banquet	80 delegates
		exhibition	depends on exhibition size	theater	84 delegates



# The Gehry Lounge

Lower Ground Floor



## Event type

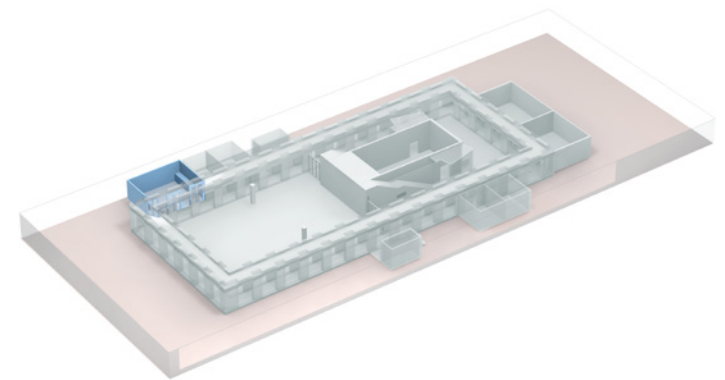
- » cocktail bar & lounge
- » receptions
- » workshops
- » meetings
- » VIP lounge

## Interior & Furnishing

- » parquet floor
- » concealable pantry kitchen
- » installed beverage station

## Technology & Equipment

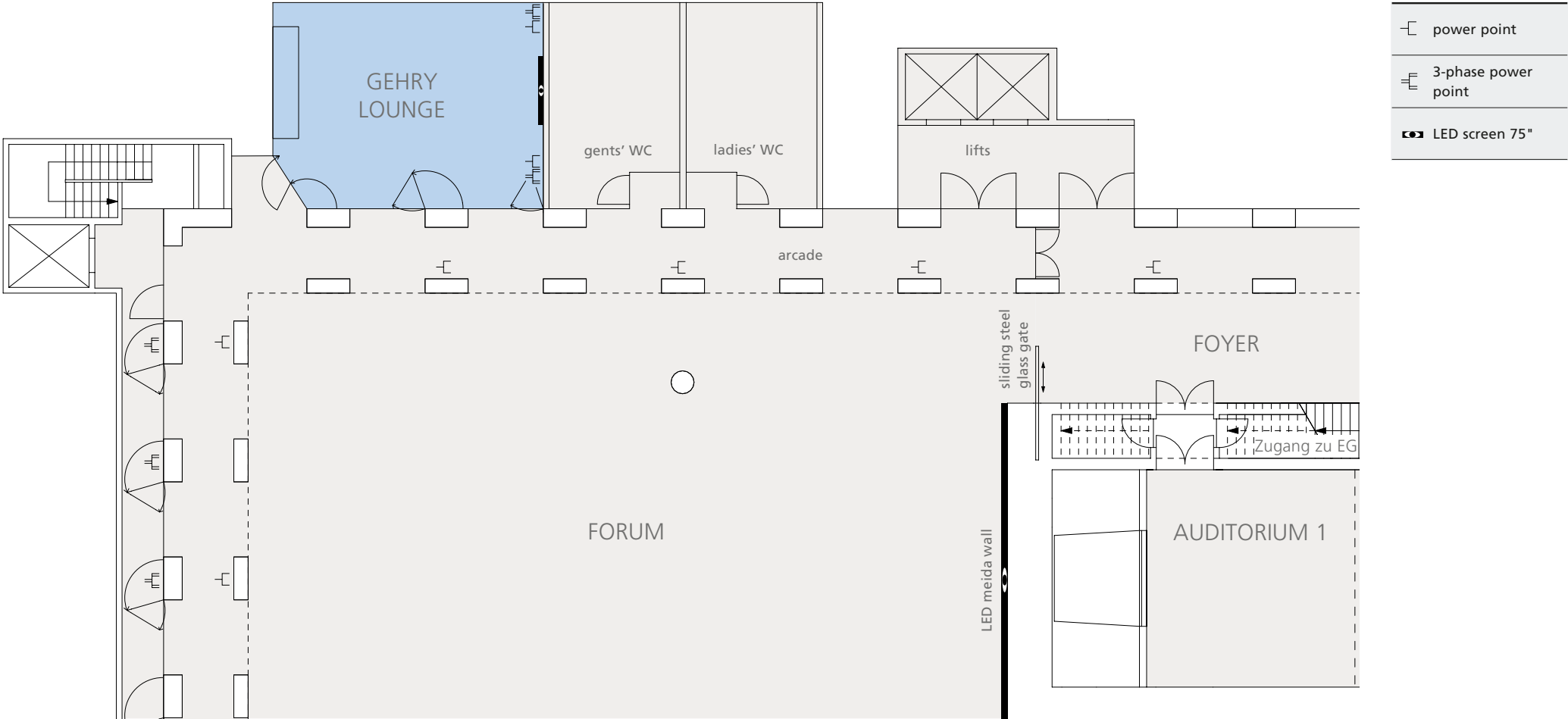
- » power connections 220 + 380 V
- » LED screen 75"
- » Soil load capacity: 5 kN/m<sup>2</sup> (500 kg/m<sup>2</sup>)
- » technical cooperation with event production experts
- » Wi-Fi









# The Gehry Lounge

Lower Ground Floor



DIMENSIONS		SEATING CAPACITY	
total area	70 m²	length	 20 delegates
length	9,20 m	theatre	 50 delegates
width	7,10 m	banquet	 36 delegates
height	4,50 m	reception	 50 delegates

# The Auditorium

Lower Ground Floor



## Event type

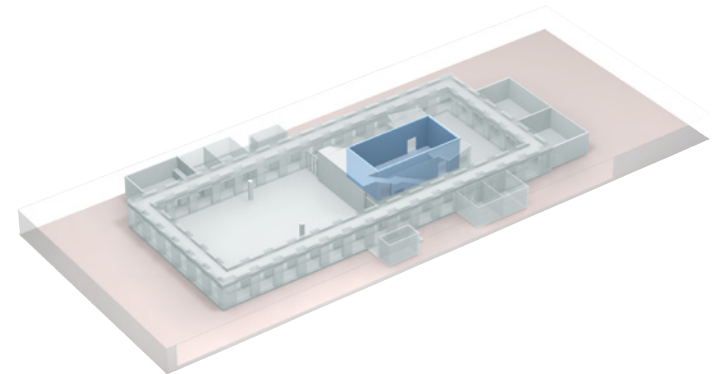
- » workshops
- » meetings
- » exhibitions & product presentations
- » additional service area
- » press conferences
- » lectures

## Interior & Furnishing

- » flexible room concept; can be divided into two separate areas
- » indirect lighting
- » under-floor air-conditioning
- » red carpet

## Technology & Equipment

- » technical cooperation with event production experts
- » Dimmable lighting
- » Soil load capacity: 5 kN/m<sup>2</sup> (500 kg/m<sup>2</sup>)
- » Wi-Fi





# The Auditorium Lower Ground Floor

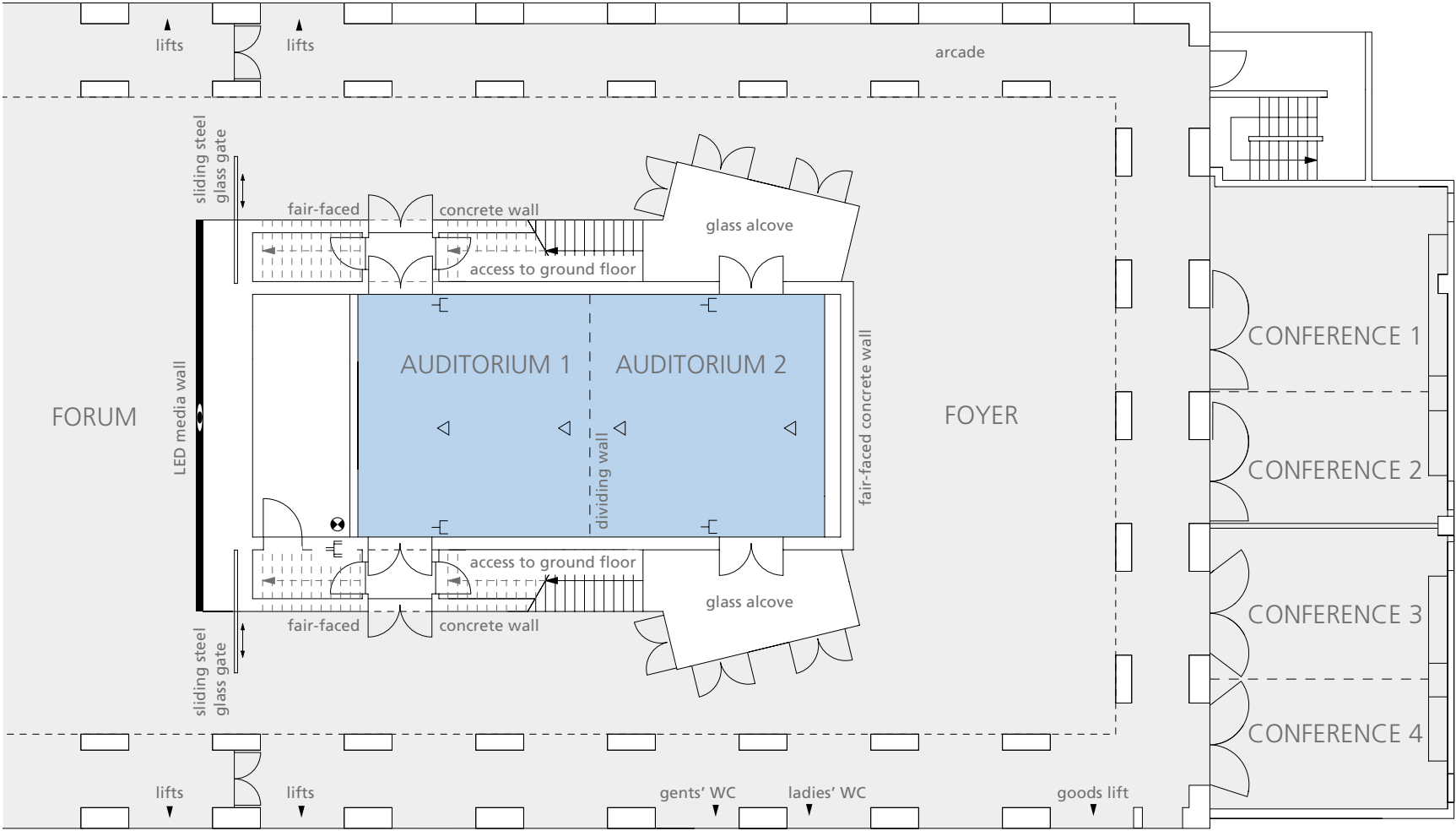
M 1:200

10

5

2,5

1 0,5



	power point
	3-phase power point
	power, tel./data lines
	access ways TV and audio broadcasting system

DIMENSIONS	Auditorium 1 & 2	Auditorium 1	Auditorium 2
total area	107,38 m²	53,36 m²	53,28 m²
length	14,55 m	7,22 m	7,20 m
width	7,38 m	7,38 m	7,38 m
height	4,55 m	4,55 m	4,55 m

SEATING CAPACITY	Auditorium 1 & 2	Auditorium 1	Auditorium 2
classroom	60 delegates	20 delegates	20 delegates
boardroom	30 delegates	16 delegates	16 delegates
theatre	100 delegates	35 delegates	35 delegates
U-shape	30 delegates	12 delegates	12 delegates



# The Conferences

Lower Ground Floor



## Event type

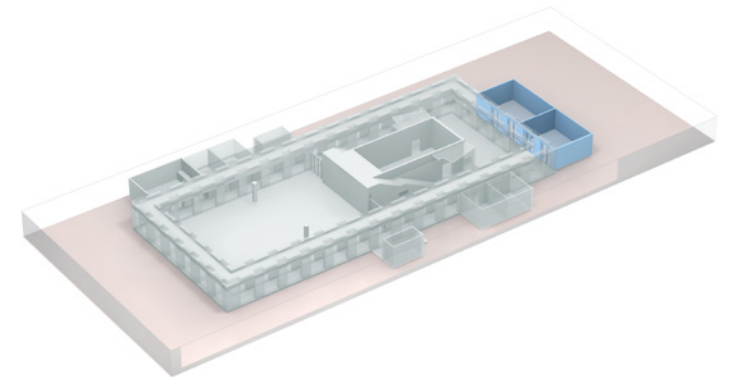
- » conferences
- » workshops
- » presentations
- » lounge
- » exhibitions
- » additional service area

## Interior & Furnishing

- » indirect daylight
- » flexible room concept;  
partition walls
- » red carpet
- » installed beverage station

## Technology & Equipment

- » TV frequency links
- » Wi-Fi
- » Soil load capacity: 5 kN/m<sup>2</sup> (500 kg/m<sup>2</sup>)

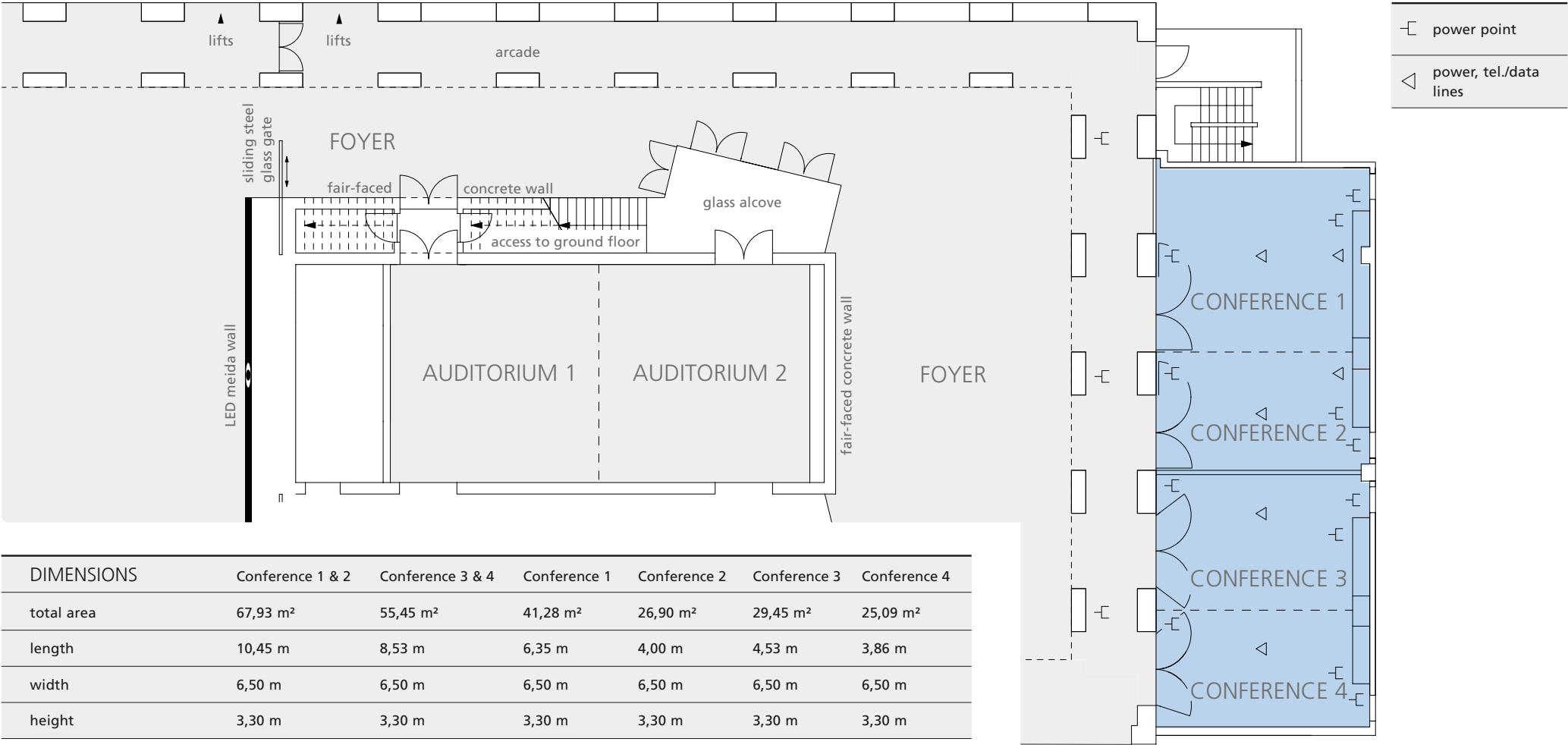







# The Conferences

Lower Ground Floor

M 1:200



DIMENSIONS	Conference 1 & 2	Conference 3 & 4	Conference 1	Conference 2	Conference 3	Conference 4
total area	67,93 m²	55,45 m²	41,28 m²	26,90 m²	29,45 m²	25,09 m²
length	10,45 m	8,53 m	6,35 m	4,00 m	4,53 m	3,86 m
width	6,50 m	6,50 m	6,50 m	6,50 m	6,50 m	6,50 m
height	3,30 m	3,30 m	3,30 m	3,30 m	3,30 m	3,30 m

SEATING CAPACITY	Conference 1 & 2	Conference 3 & 4	Conference 1	Conference 2	Conference 3	Conference 4
classroom 	30 delegates	24 delegates	–	–	–	–
boardroom 	25 delegates	20 delegates	12 delegates	10 delegates	10 delegates	10 delegates
theatre 	55 delegates	40 delegates	–	–	–	–



# The Gallery with Boardroom and Quadriga room

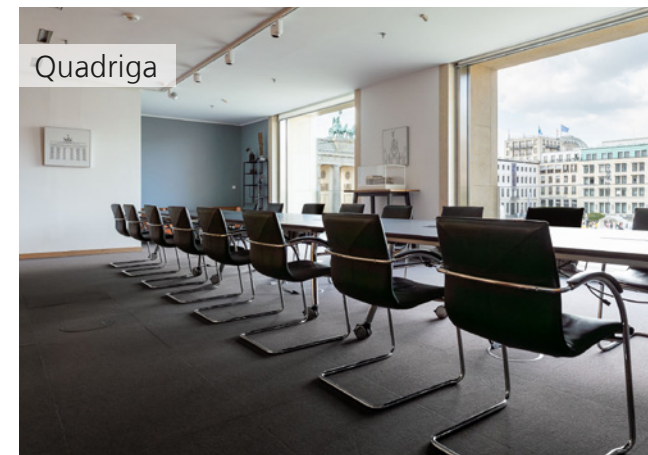
First Floor



Boardroom



Gallery



Quadriga

## The Gallery

### Event Type

- » receptions

### Interior & Furnishing

- » direct daylight
- » view to the Brandenburg Gate
- » opens to the atrium

### Technology & Equipment

- » 220V power connections
- » Wi-Fi

## Boardroom and Quadriga room

### Event Type

- » conferences
- » presentations
- » Banquet
- » film set

### Interior & Furnishing

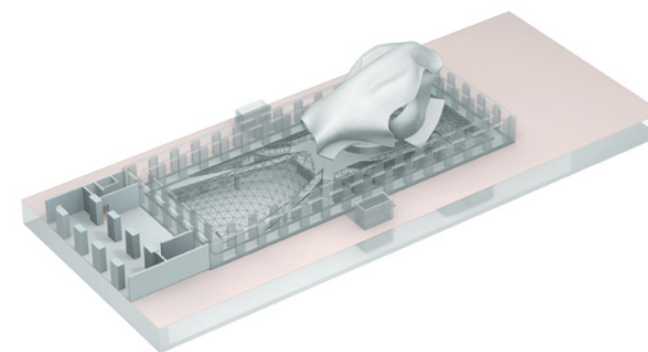
- » direct daylight
- » view to the Brandenburg Gate
- » accessible balconies facing Pariser Platz

### Technology & Equipment

- » 220V power connections
- » technical cooperation with event production experts
- » Wi-Fi

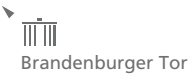
### Room Quadriga

- » Permanently installed beverage station
- » 85" monitor with 4 HDMI connections & Airplay
- optionally expandable with microphone units and conference camera

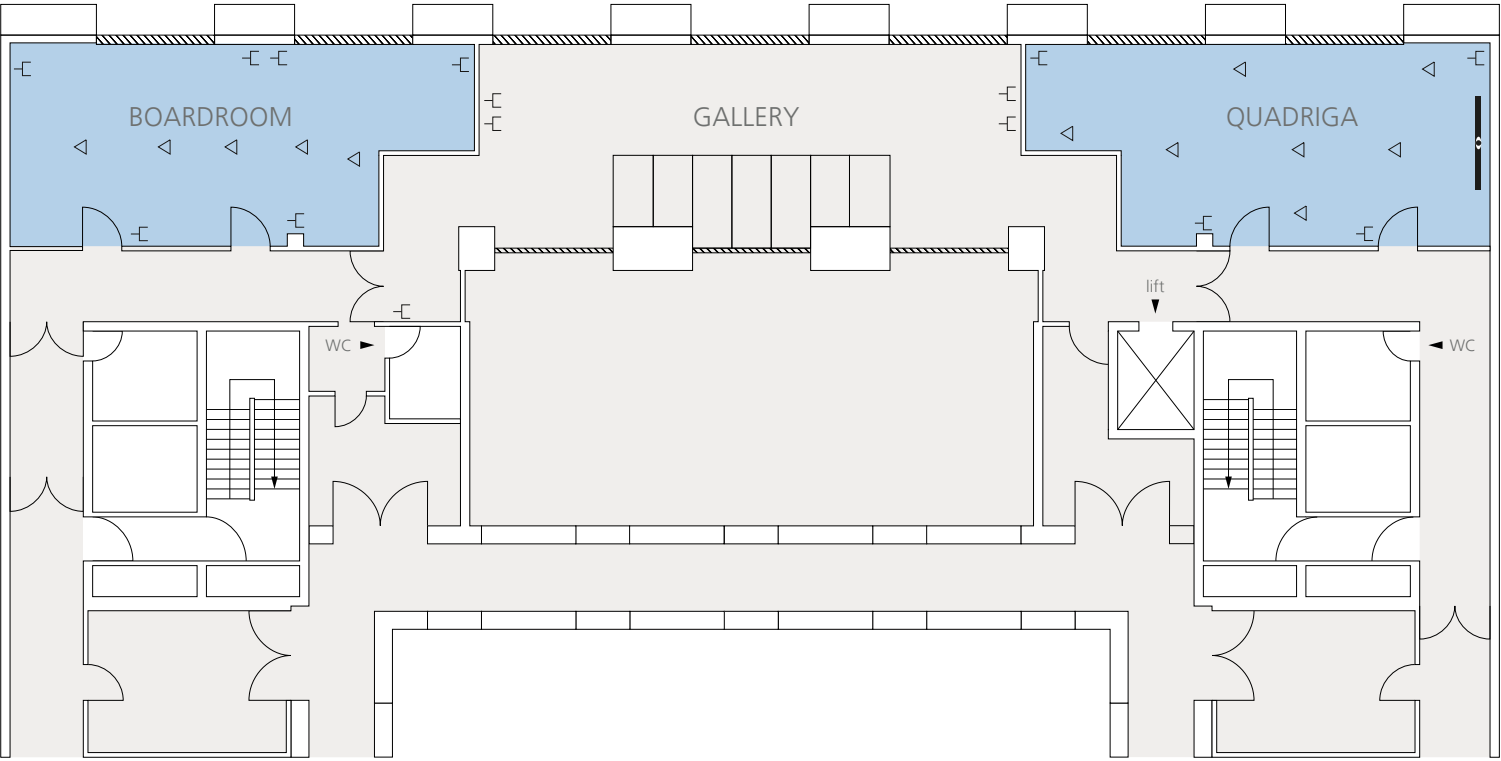




# The Gallery with Boardroom and Quadriga room | First Floor



Pariser Platz



power point

power, tel./data lines

LCD screen 85"

DIMENSIONS	Gallery	Quadriga	Boardroom
total area	75 m²	65 m²	65 m²
length	15 m	12,85 - 10,20 m	12,85 - 10,20 m
width	5 m	5,10 m	5,10 m
height	2,80 m	2,80 m	2,80 m

SEATING CAPACITY	Gallery	Quadriga	Boardroom
boardroom	-	26 delegates	26 delegates
theatre	-	45 delegates	45 delegates
banquet	-	36 delegates	36 delegates
reception	60 delegates	40 delegates	40 delegates

# The Conferences 5 to 8

First Floor



## Event type

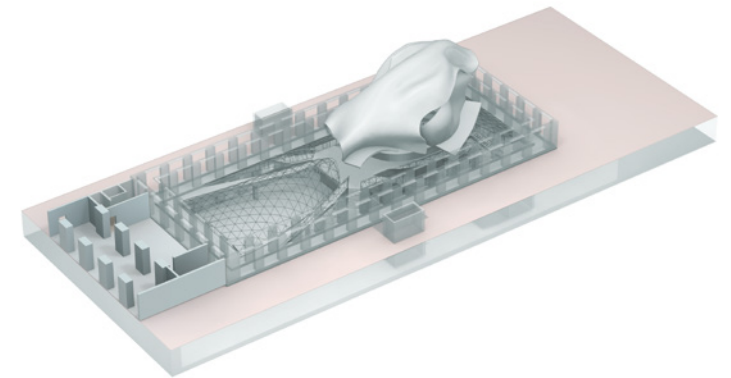
- » workshops
- » presentations
- » conferences
- » Lounge

## Interior & Furnishing

- » indirect daylight
- » partition wall
- » carpet
- » Creative workshop furniture available
- » Conferences 5 & 6 with flexible room concept

## Technology & Equipment

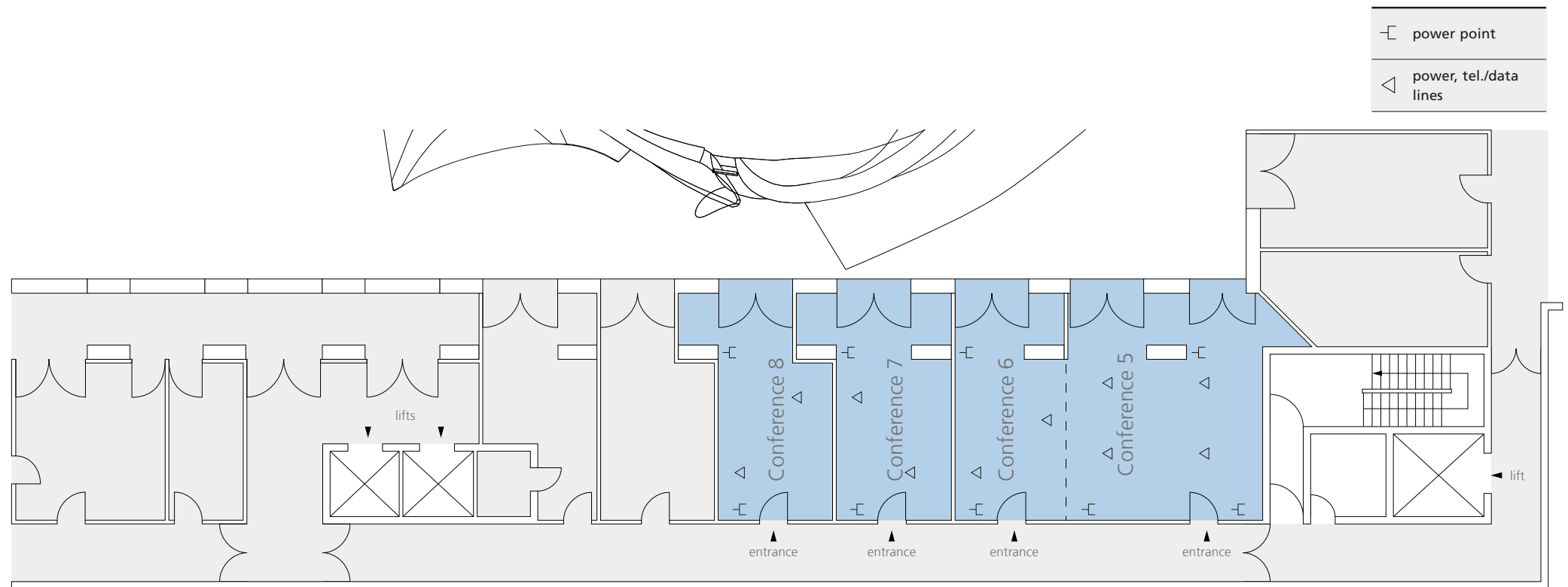
- » flexible monitor positions
- » Wi-Fi





# The Conferences 5 to 8 First Floor

M 1:200 10 5 2,5 1 0,5



DIMENSIONS	Conference 5	Conference 6	Conference 5 & 6	Conference 7	Conference 8
total area	53 m <sup>2</sup>	33 m <sup>2</sup>	86 m <sup>2</sup>	32 m <sup>2</sup>	32 m <sup>2</sup>
length	6,75 m	4 m	10,85 m	4 m	4 m
width	5,50 m	5,50 m	5,50 m	5,50 m	5,50 m
height	2,80 m	2,80 m	2,80 m	2,80 m	2,80 m

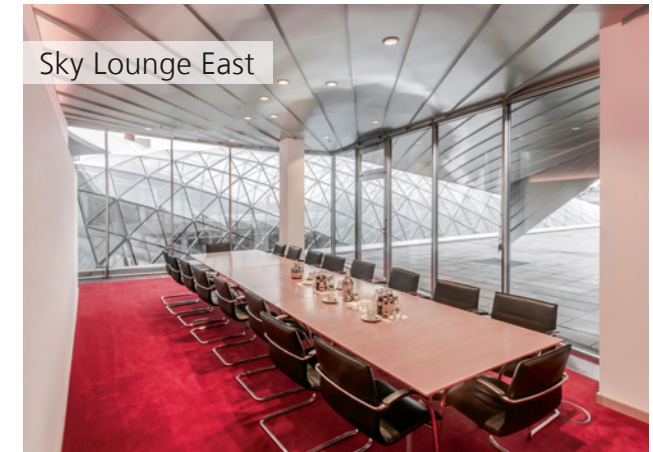
SEATING CAPACITY	Conference 5	Conference 6	Conference 5 & 6	Conference 7	Conference 8
boardroom	18 delegates	12 delegates	30 delegates	12 delegates	12 delegates
theatre	35 delegates	20 delegates	70 delegates	20 delegates	20 delegates
U-shape	14-16 delegates	-	24 delegates	-	-
classroom	20 delegates	-	28 delegates	-	-



# The Sky Lobby

with Sky Lounge West & East

Top Floor



## Event type

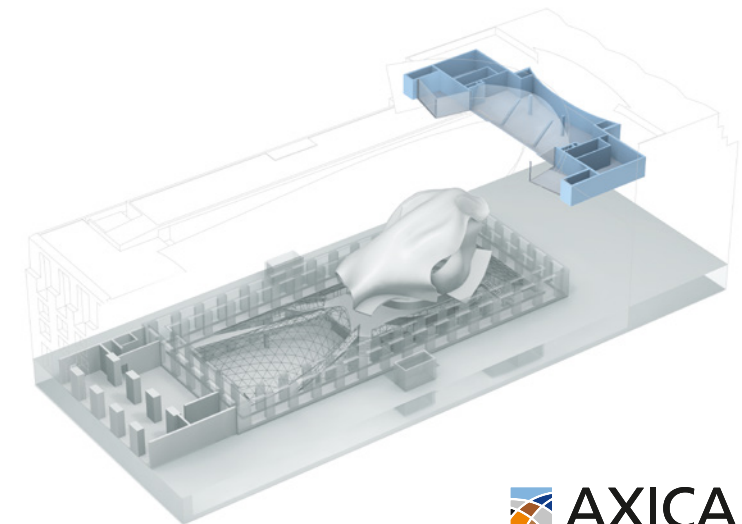
- » receptions
- » Banquet
- » workshops
- » exhibitions
- » presentations
- » conferences
- » film set

## Interior & Furnishing

- » open, expansive atmosphere on the 6th floor
- » direct daylight, glass front
- » view of the building's Atrium and the rooftops of Berlin
- » at eye-level with the Quadriga on the Brandenburg Gate and the dome of the Reichstag building
- » separate cloakroom and toilets

## Technology & Equipment

- » coloured interior lighting
- » power connections 220 + 380 V
- » technical cooperation with event production experts
- » WiFi





# The Sky Lobby With Sky Lounge West & East | Top Floor

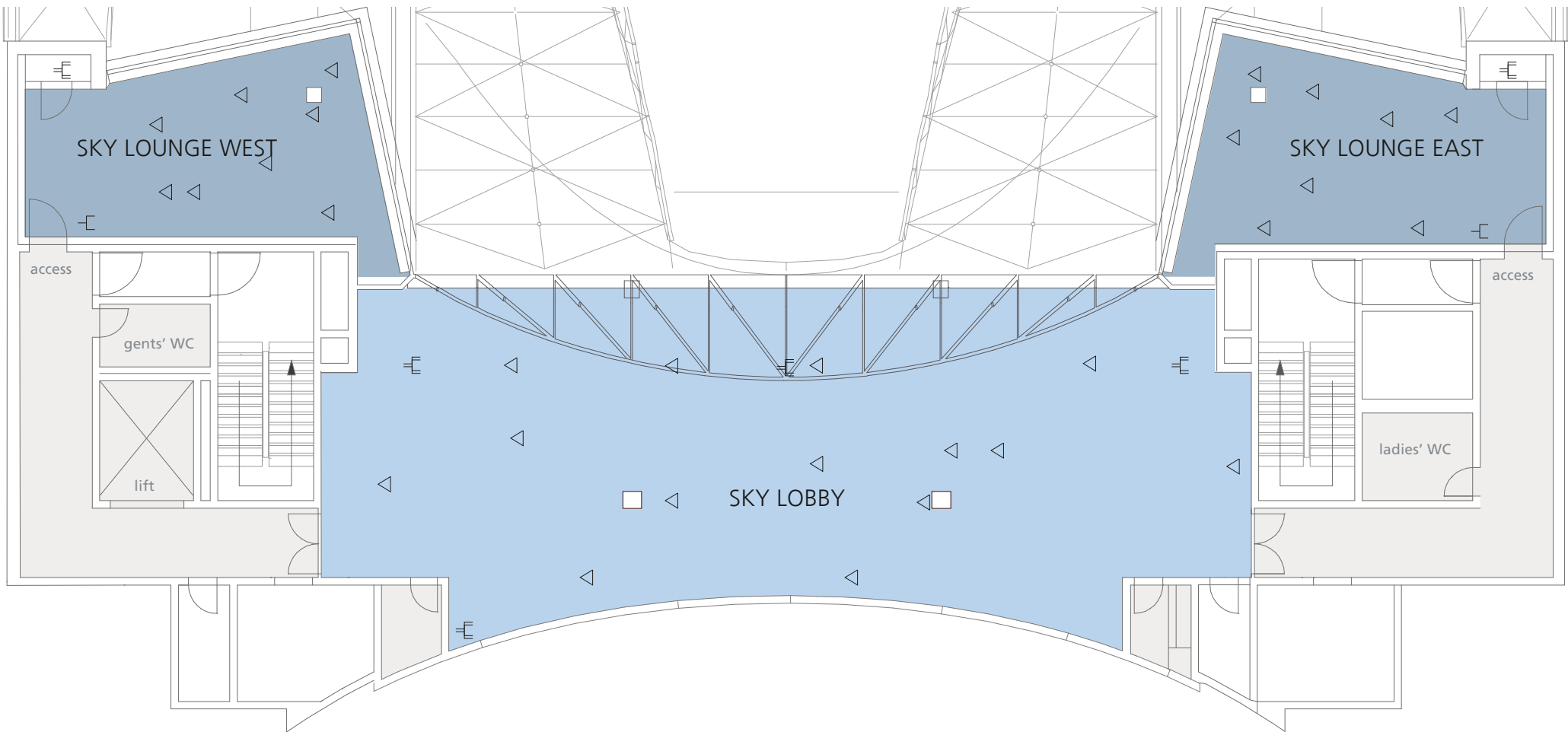
M 1:100

5

2,5

1

0,5



DIMENSIONS SKY LOBBY	
total area	204 m²
length	24,80 m
width	8,14 - 9,65 m
height	4,35 - 5,59 m

SEATING CAPACITY SKY LOBBY		
classroom		40 delegates
theatre		80 delegates
banquet		50 delegates
reception		80 delegates

DIMENSIONS SKY LOUNGE	
total area	46 m²
length	9,00 - 10,00 m
width	4,00 - 5,80 m
height	3,00 m

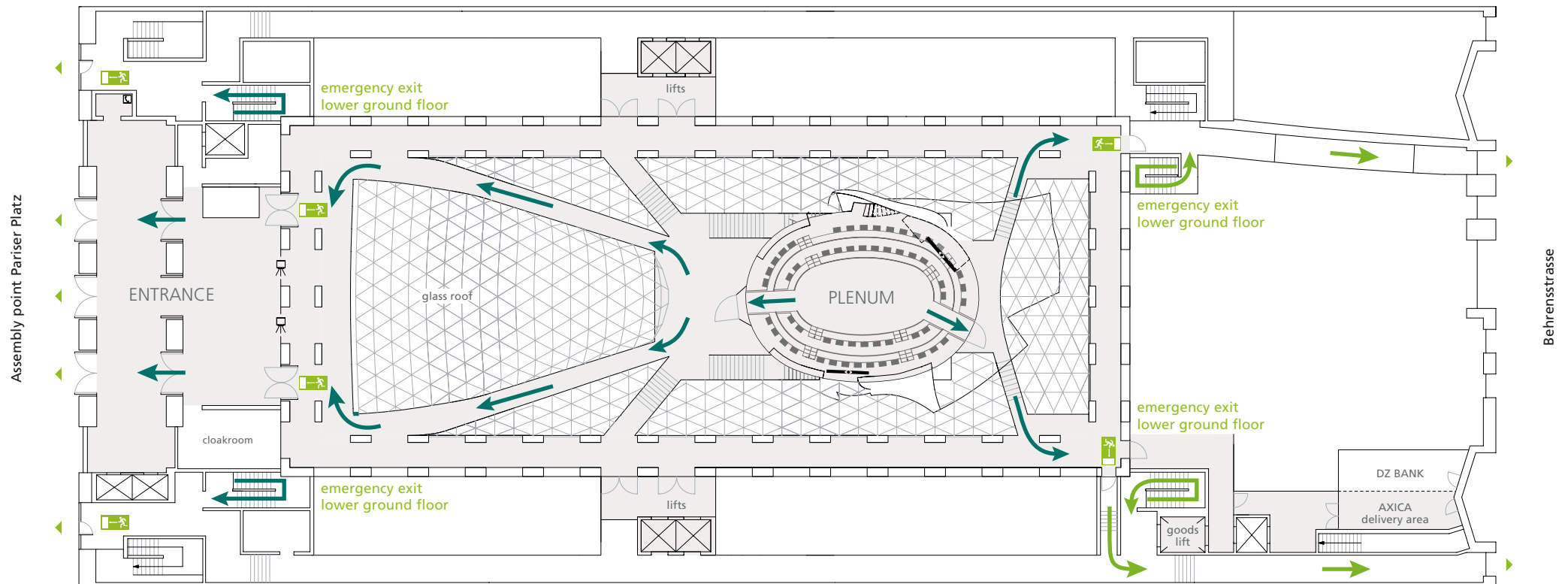
CAPACITY SKY LOUNGE		
boardroom		18 delegates
theatre		25 delegates
banquet		12 delegates
reception		20 delegates

	3-phase power point
	power, tel./data lines



# Evacuation Plan

## Ground Floor

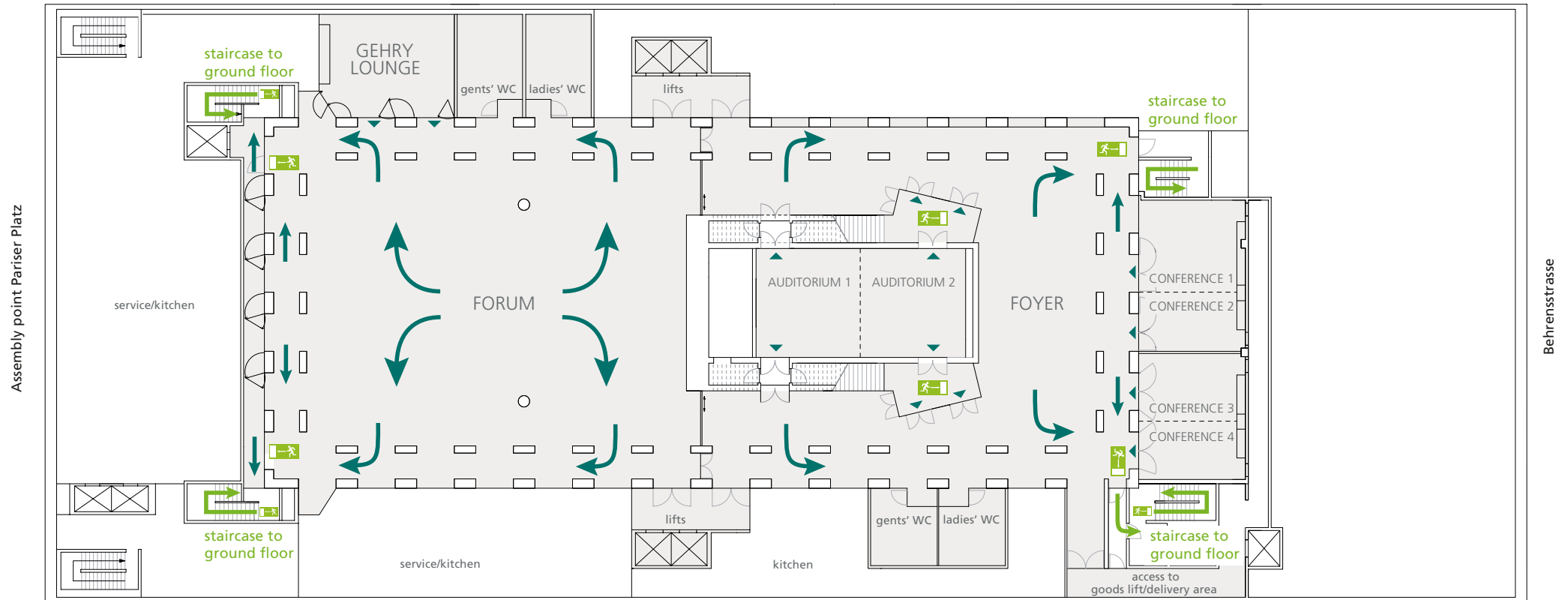


## IN CASE OF EMERGENCY

- » Please remain calm.
- » Please evacuate the building via the designated emergency exits.
- » Pay attention to announcements.
- » Do not use lifts.
- » Proceed to the assembly point at Pariser Platz.
- » Await further instructions.

# Evacuation Plan

## Lower Ground Floor

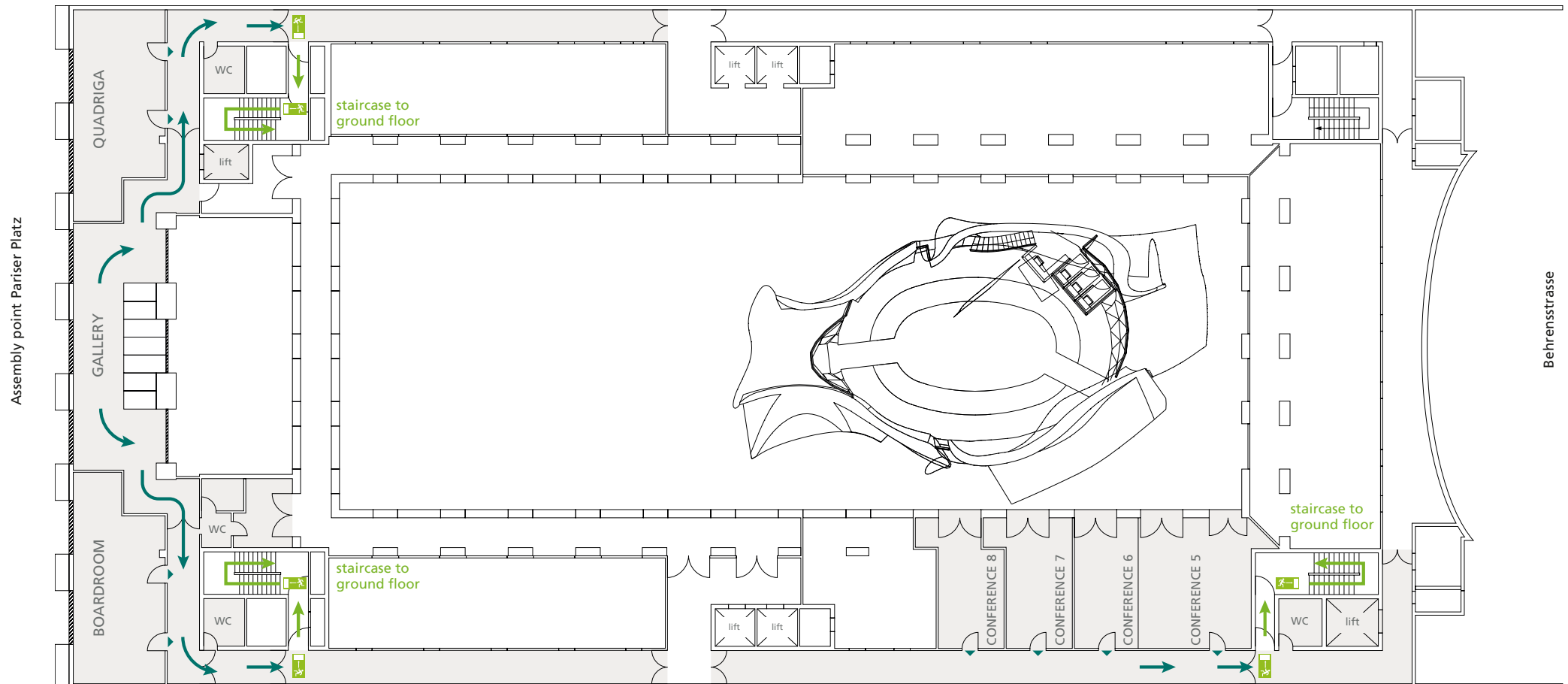


### IN CASE OF EMERGENCY

- » Please remain calm.
- » Please evacuate the building via the designated emergency exits.
- » Pay attention to announcements.
- » Do not use lifts.
- » Proceed to the assembly point at Pariser Platz.
- » Await further instructions.

# Evacuation Plan

## First Floor

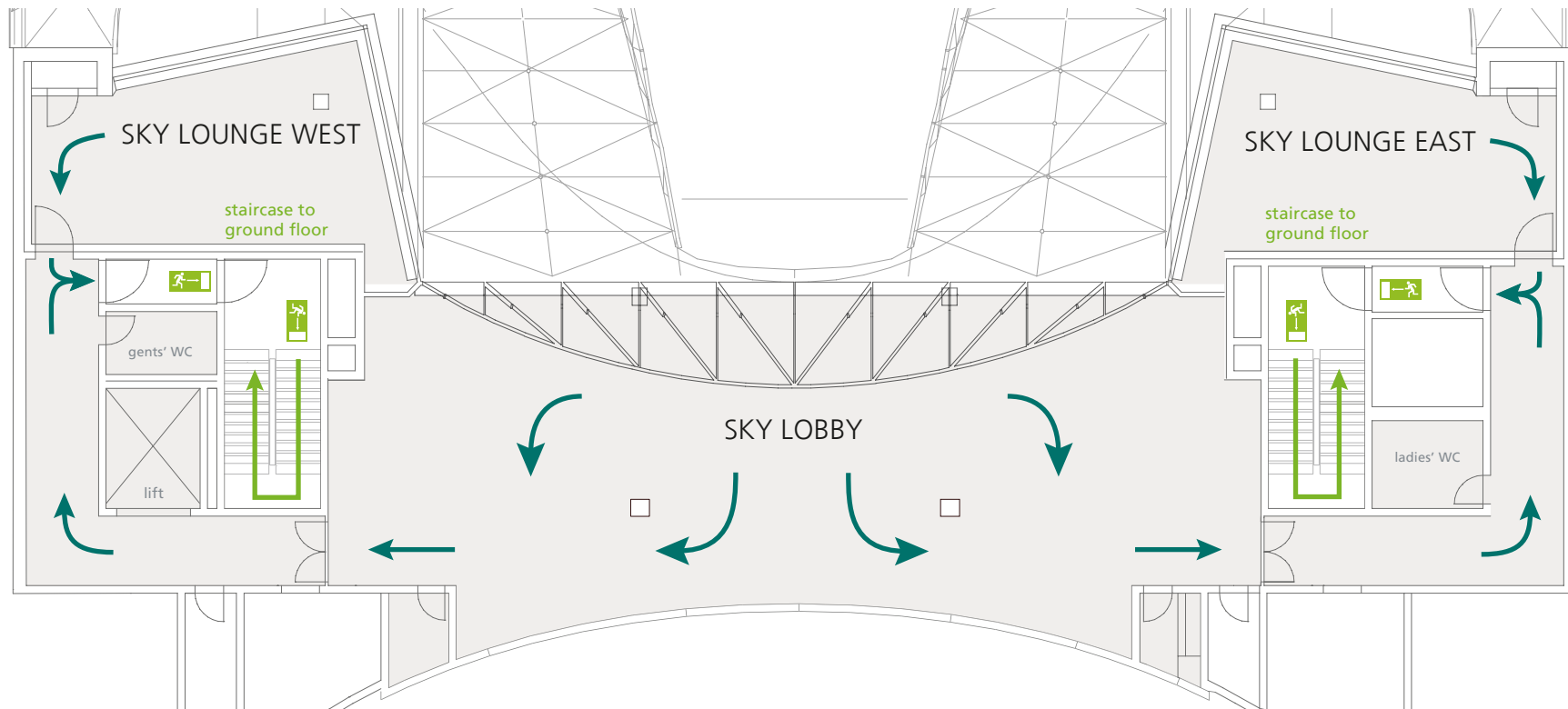


### IN CASE OF EMERGENCY

- » Please remain calm.
- » Please evacuate the building via the designated emergency exits.
- » Pay attention to announcements.
- » Do not use lifts.
- » Proceed to the assembly point at Pariser Platz.
- » Await further instructions.

# Evacuation Plan

## Sky Lobby



### IN CASE OF EMERGENCY

- » Please remain calm.
- » Please evacuate the building via the designated emergency exits.
- » Pay attention to announcements.
- » Do not use lifts.
- » Proceed to the assembly point at Pariser Platz.
- » Await further instructions.