

The Foyer

Lower Ground Floor



Event type

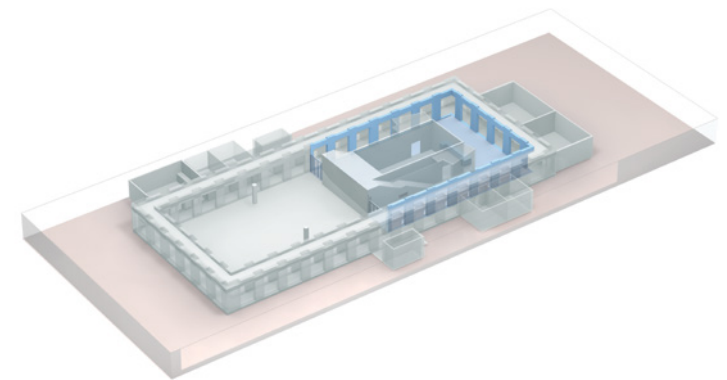
- » receptions
- » coffee breaks
- » exhibitions & product presentations
- » cocktail bar & lounge
- » dinner & meetings

Interior & Furnishing

- » direct daylight
- » red carpet
- » arcade
- » access to all spaces in the basement
- » flexible beverage bar

Technology & Equipment

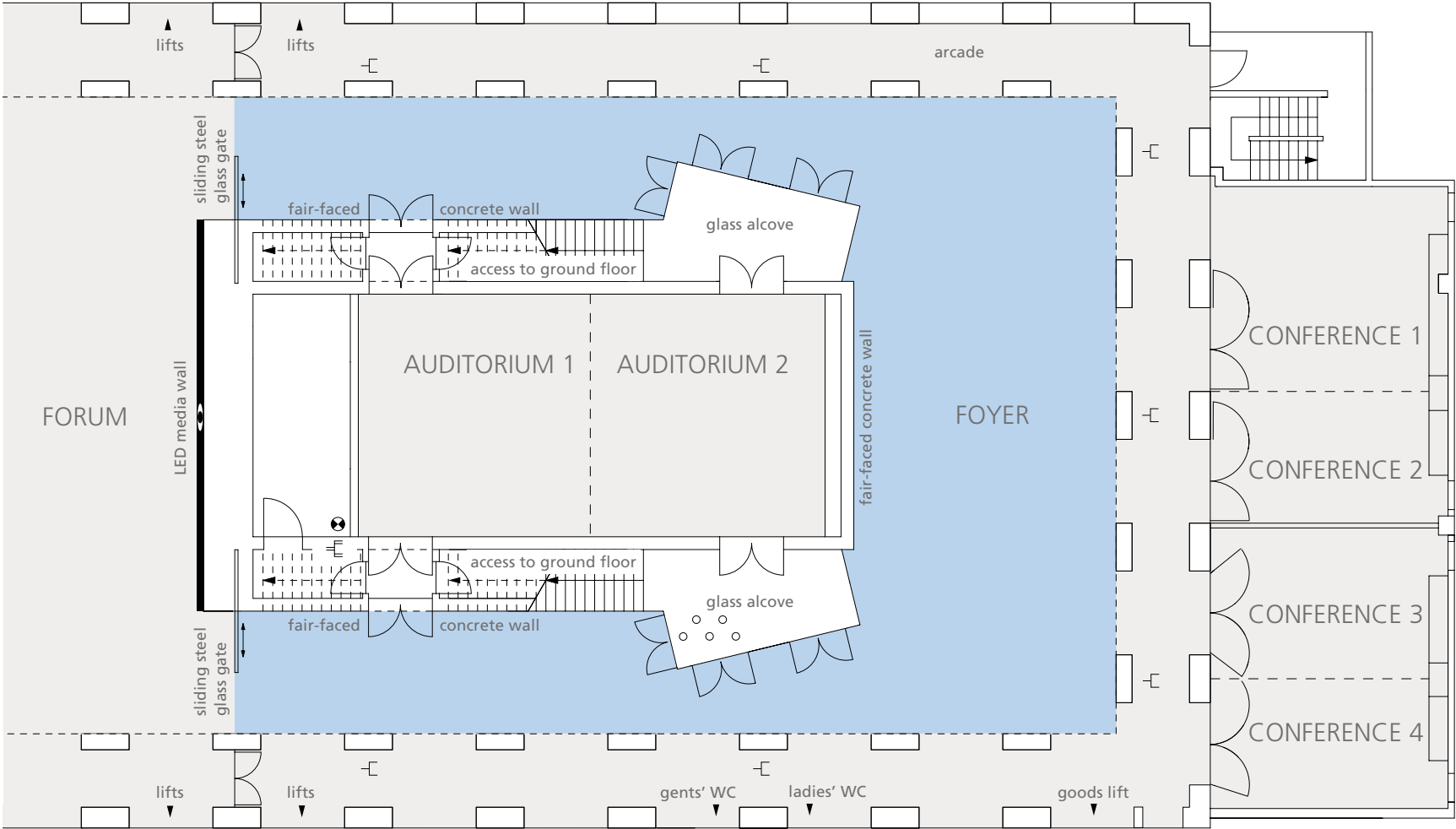
- » PA system Kling & Freitag
- » Dimmable lighting
- » Soil load capacity: 5 kN/m² (500 kg/m²)
- » Wi-Fi





The Foyer Lower Ground Floor

M 1:200



	power point
	3-phase power point
	access ways TV and audio broadcasting system

DIMENSIONS		SEATING CAPACITY			
total area	200 m²	reception/buffet	250 delegates	banquet	80 delegates
		exhibition	depends on exhibition size	theater	84 delegates