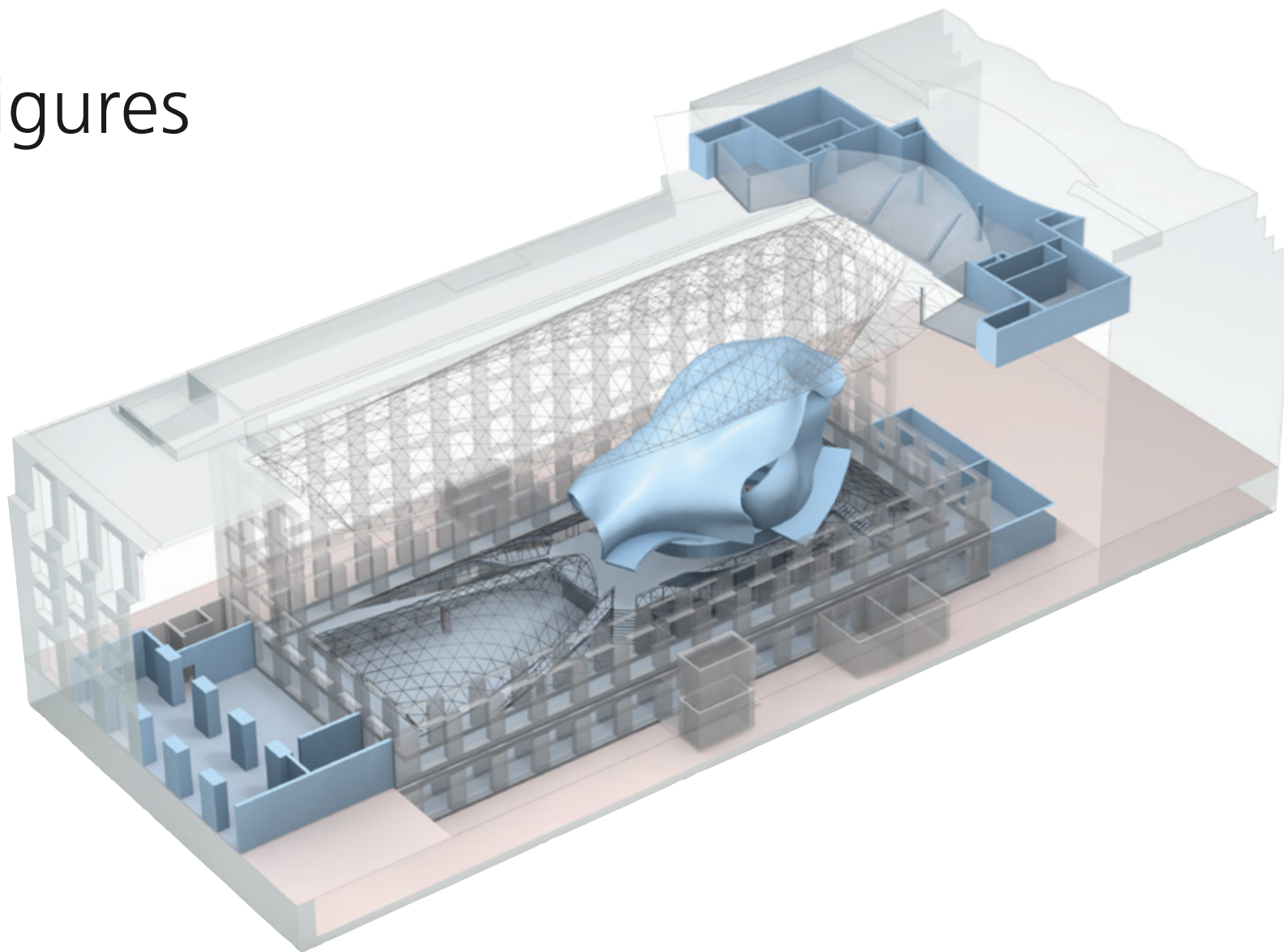


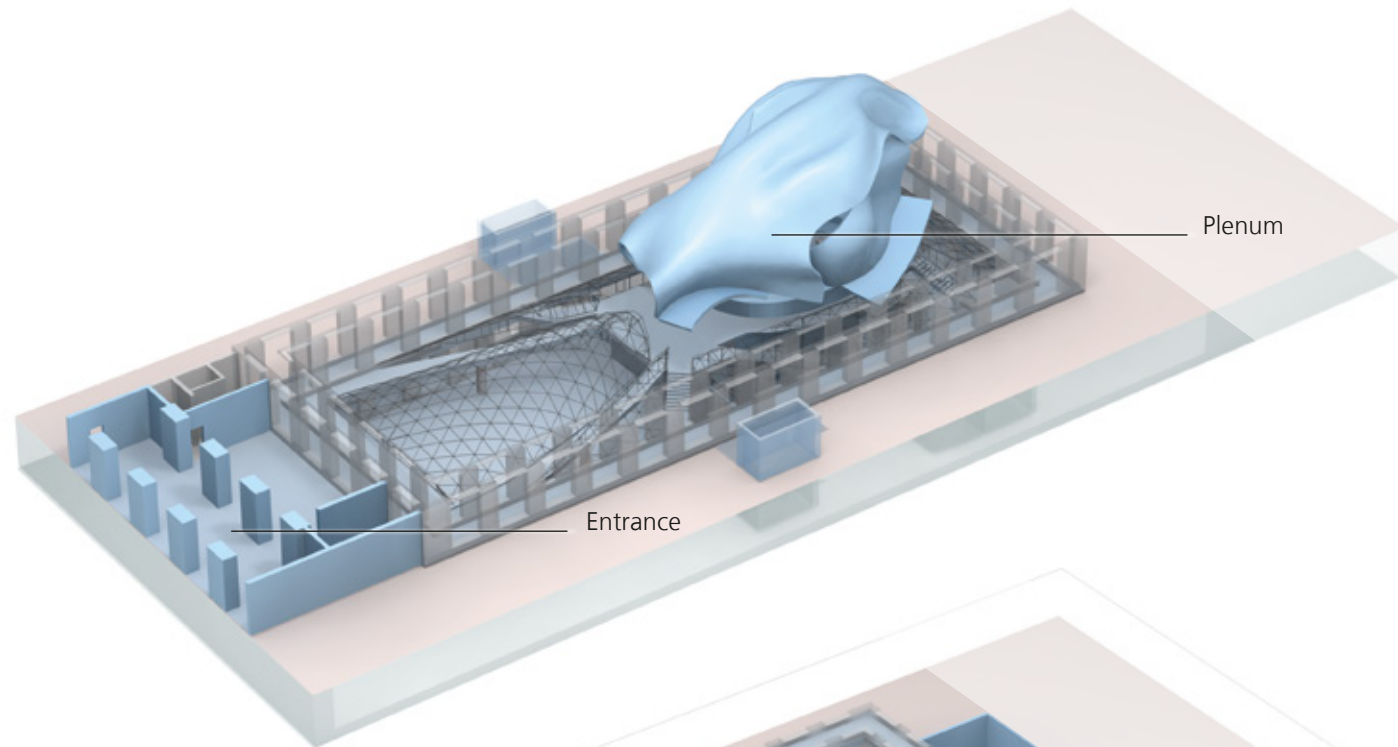
Facts & Figures

Event Planner

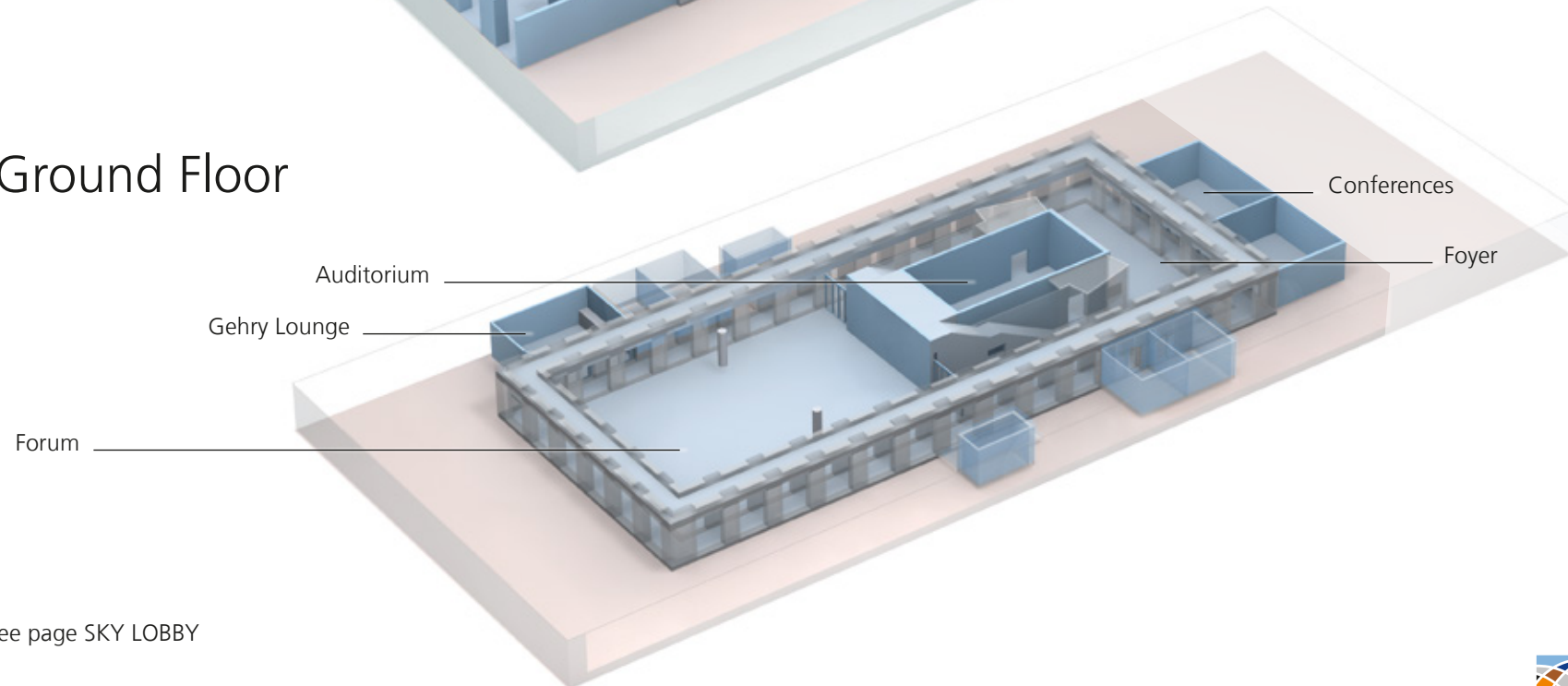


Here you will find all the details necessary for planning your event: floor plans, technical data and information on room design, capacities and services available at AXICA.

Ground Floor

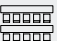
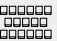

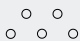



Lower Ground Floor



TOP FLOOR » see page SKY LOBBY

Capacities Overview

SPACES	AREA	CLASSROOM 	THEATRE 	BANQUET 	RECEPTION 	BOARDROOM 
PLENUM	188 m²	74 delegates	80 delegates	-	-	20 delegates
FORUM	530 m²	250 delegates	500 delegates	350 delegates	500 delegates	-
FOYER	200 m²	-	84 delegates	80 delegates	250 delegates	-
AUDITORIUM 1 & 2 *	107 m²	60 delegates	100 delegates	-	-	30 delegates
CONFERENCES 1 & 2 *	68 m²	30 delegates	55 delegates	-	-	25 delegates
CONFERENCES 3 & 4 *	55 m²	24 delegates	40 delegates	-	-	20 delegates
CONFERENCES 5 & 6 *	86 m²	28 delegates	70 delegates	-	-	30 delegates
GEHRY LOUNGE	70 m²	-	-	35 delegates	35 delegates**	-
SKY LOBBY	204 m²	40 delegates	80 delegates	50 delegates	80 delegates	-
SKY LOUNGES	46 m²	-	25 delegates	12 delegates	20 delegates	18 delegates
QUADRIGA	65 m²	-	45 delegates	-	40 delegates	26 delegates

* flexible partitioning ** café seating

Interior & Furnishing

- » fully air-conditioned rooms
- » double glass roof allows natural lighting on all floors
- » colour: red carpet, parquet flooring in arcades and Plenum, pine wall panels
- » white lighting, partly dimmable
- » designer furniture
- » fitted bar in the Gehry Lounge
- » Facilities accessible for people with disabilities
- » green electricity

Technology & Equipment

- » access to WLAN
- » power points
- » technical cooperation with event production experts
- » goods lift (1.40 x 2.50 x 2.40 m high), capacity 27 (maximum load 2,500 kg), space between opened doors 1.39 m
- » separate delivery area (4.50 m wide x 3.00 m high), maximum load 3,500 kg

Services

- » in-house catering and service team
- » cooperation for decoration and furniture
- » in-house security team
- » hostesses (cloakroom service and admission)
- » entertainment
- » guest management

We are happy to supply other services on request.

Notes

Adress

AXICA
Kongress-und Tagungszentrum GmbH
Pariser Platz 3 / D-10117 Berlin
Fon +49 30 200086-0

info@axica.de
www.axica.de

Delivery area / Delivery address

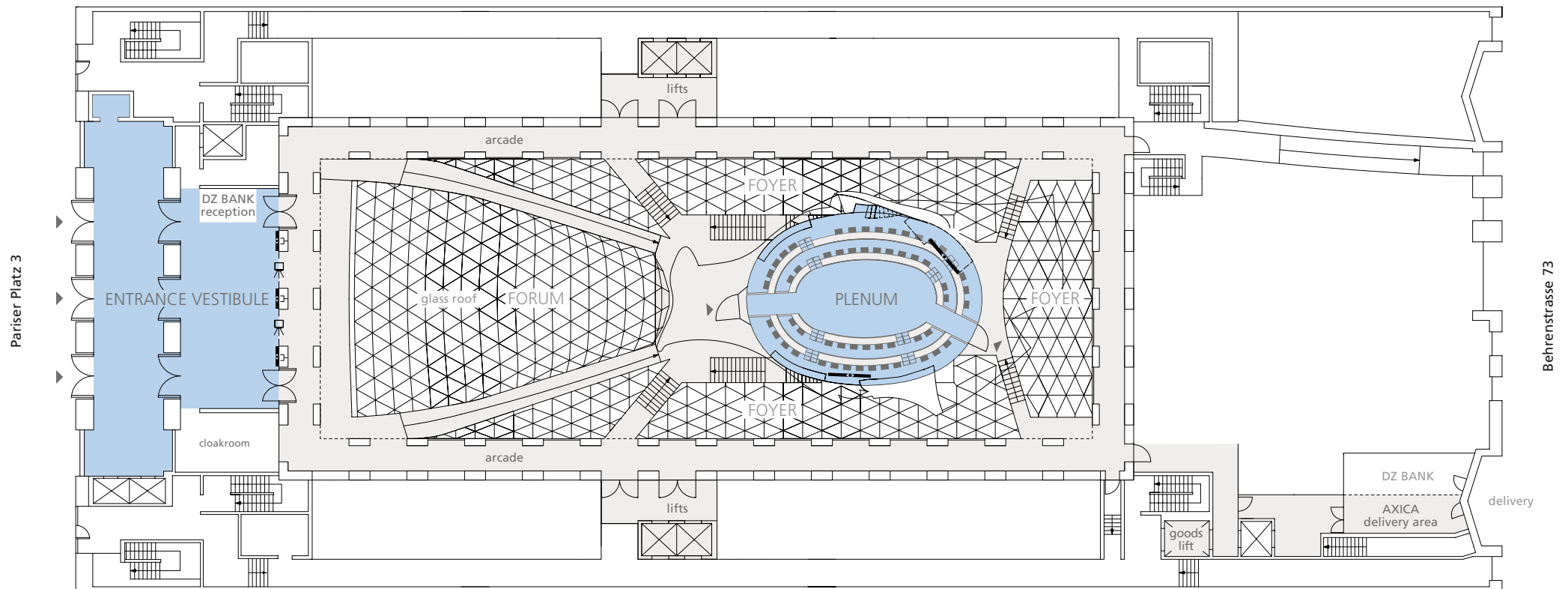
AXICA
Behrenstrasse 73 / D-10117 Berlin



Ground Floor

M 1:400

10 5 2,5 1 0,5

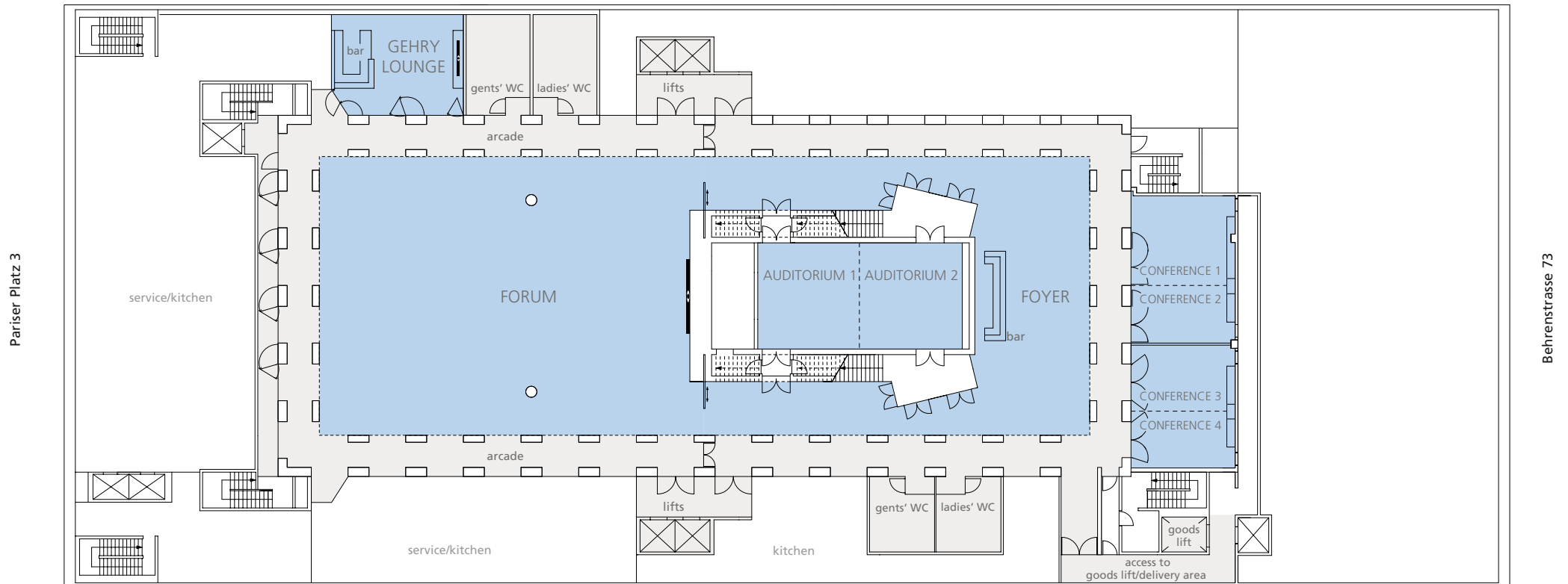




Lower Ground Floor

M 1:400

10 5 2,5 1 0,5



The Entrance Vestibule

Ground Floor



Event type

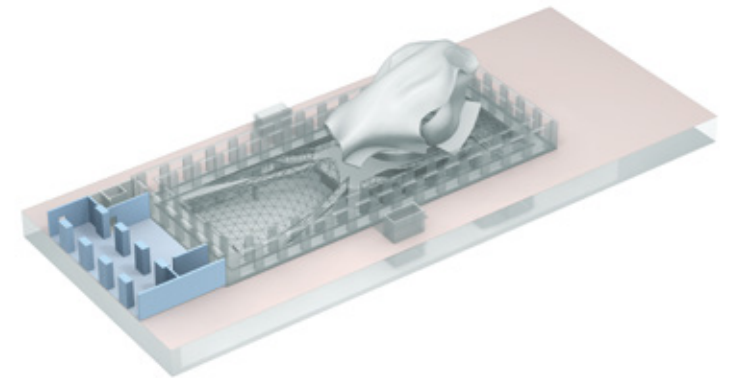
- » accreditation
- » cloakroom

Interior & Furnishing

- » Italian limestone façade
- » large steel glass doors
- » granite floor
- » access to Wi-Fi

Equipment & Service

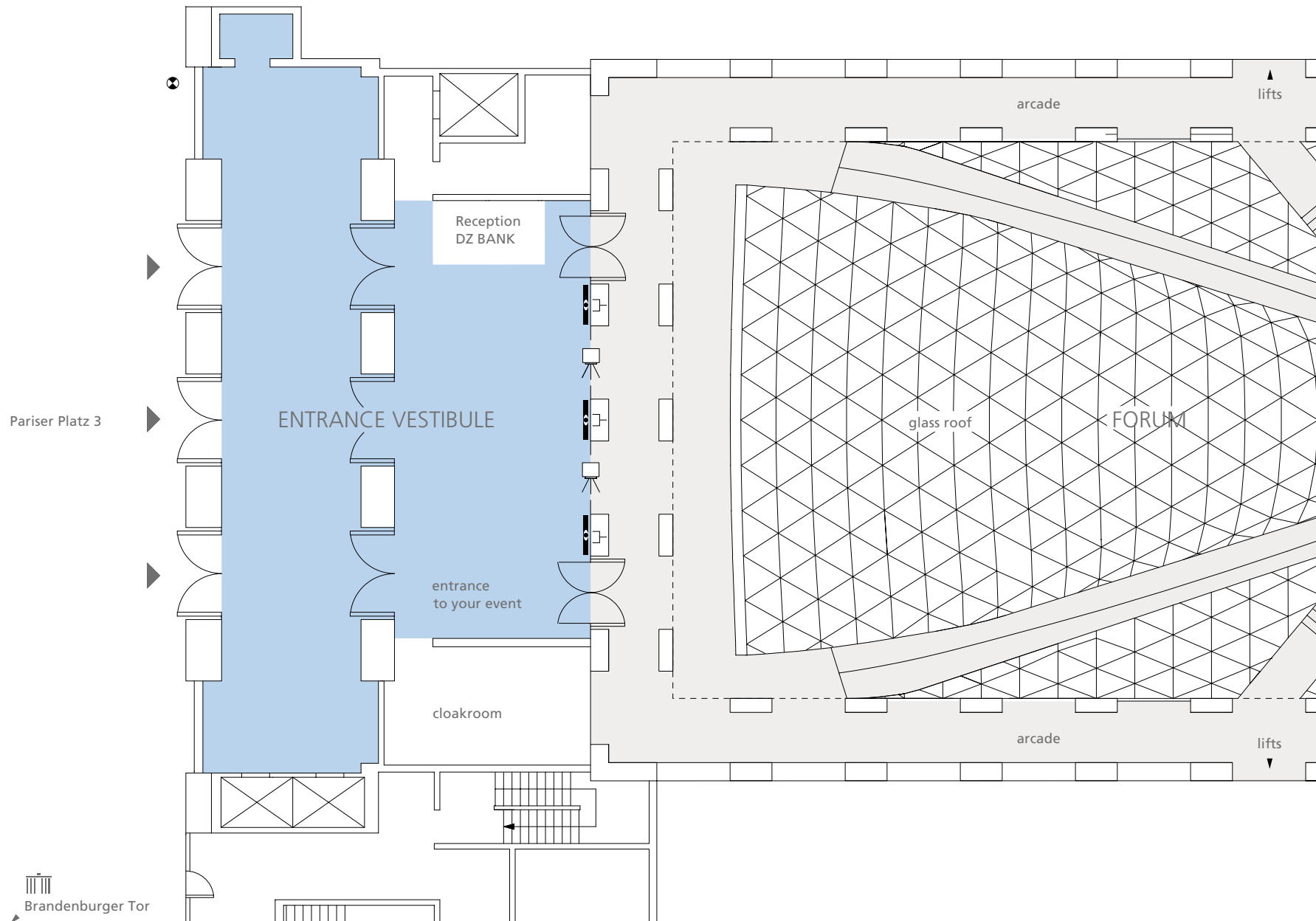
- » 3 LCD screens 47"
- » signage system
- » hostess and cloakroom service
- » in-house security
- » Wi-Fi








The Entrance Vestibule Ground Floor

M 1:200



-  TV and audio broadcasting system and floor cabling with data lines
-  power point
-  LCD screen 47"

The Plenum

Ground Floor



Event type

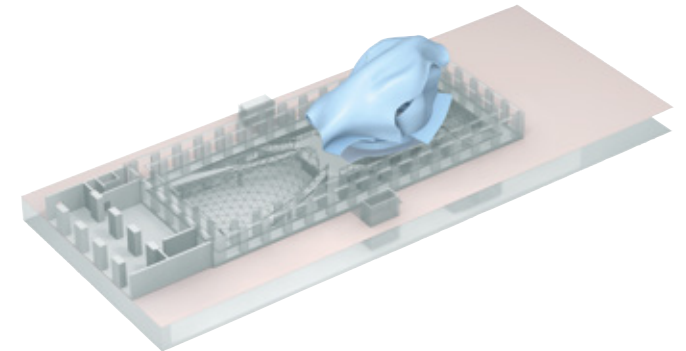
- » press conferences
- » workshops
- » meetings
- » lectures
- » plenary sessions
- » product presentations
- » podium discussions

Interior & Furnishing

- » flexible seating within the rows
- » variable speaker positioning
- » flexible seating on the parquet
- » boardroom table
- » sound-proofed wall panels
- » direct daylight

Technology & Equipment

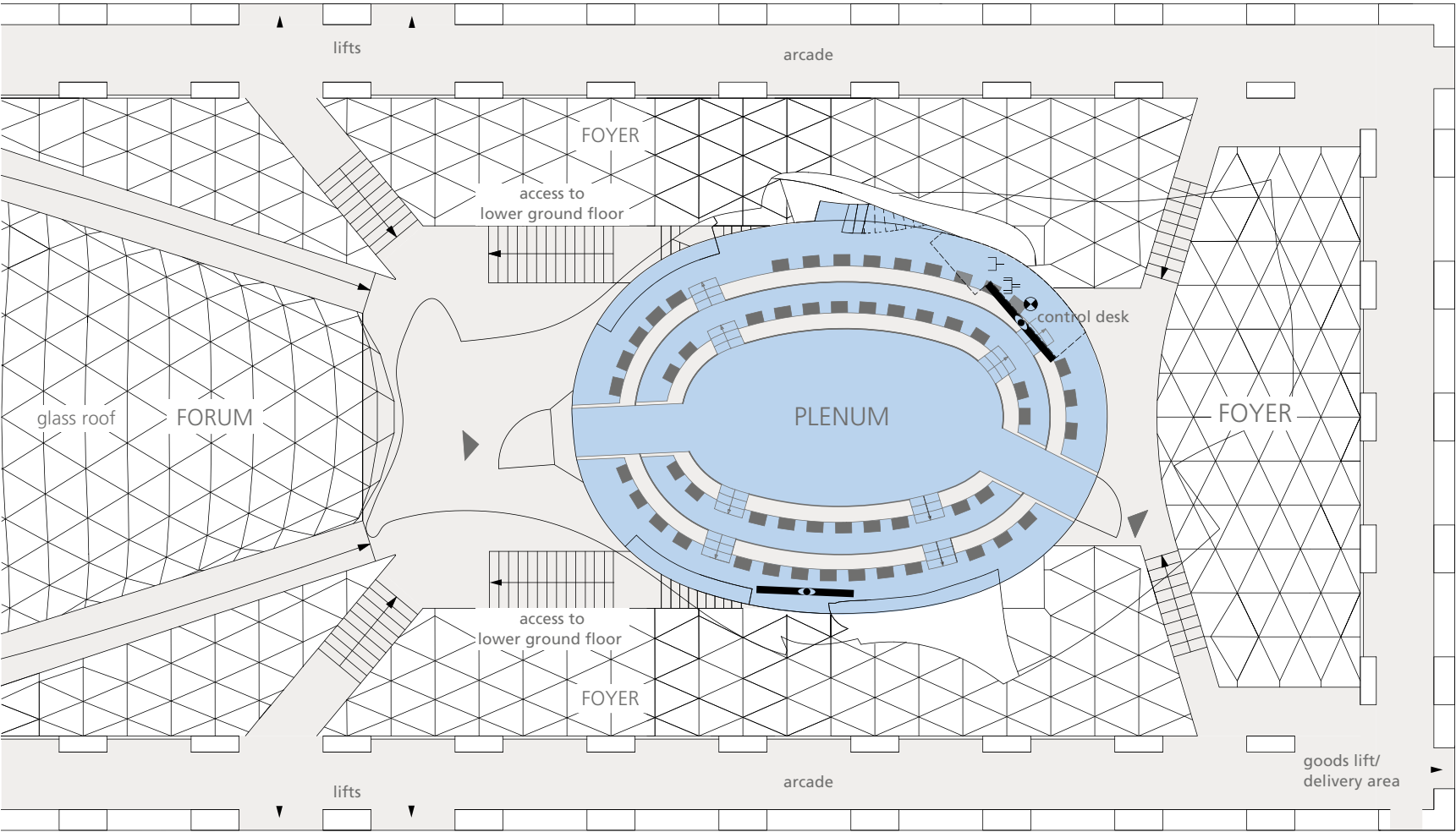
- » sound system with podium miking
- » conference 2-way intercom microphones
- » digital audio / 2-channel graphic controls inclusive external sources
- » 2 108"LCD screens
- » portable 15"preview monitors
- » LED speaker illumination
- » extensive infrastructure (optical fibre, network, XLR and power supply)


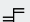
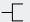



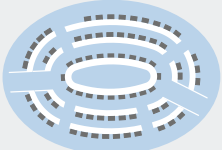
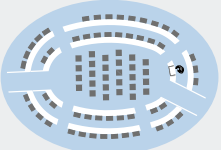
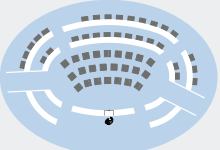


The Plenum Ground Floor

M 1:200



-  access channels to tv and audio transmission
-  3-phase power point
-  power point
-  LCD screen 108"

DIMENSIONS		SEATING CAPACITY BOARDROOM		THEATRE		PODIUM	
Area	188 m²		maximum 74 delegates parquet 20 delegates seating rows 54 delegates		maximum 80 delegates parquet 28 delegates seating rows 52 delegates		maximum 54 delegates parquet 24 delegates seating rows 30 delegates

The Forum

Lower Ground Floor



Event type

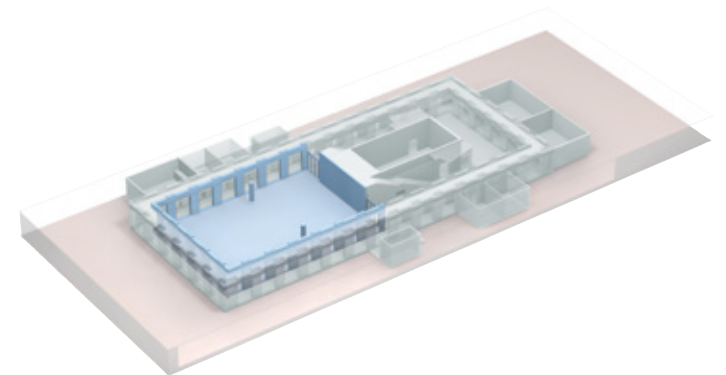
- » receptions
- » gala dinners
- » congresses
- » symposia
- » conferences
- » meetings
- » presentations
- » exhibitions
- » fashion shows
- » concerts

Interior & Furnishing

- » direct daylight, glass roof
- » red carpet
- » glass art installation
- » smooth-faced concrete wall (12 m wide and 5.58 m high)
- » access to Foyer and Gehry Lounge
- » designer furniture

Technology & Equipment

- » dimmable lighting
- » TV frequency links
- » access to Wi-Fi
- » power points
- » technical cooperation with event production experts
- » LED media wall (W 6,10 x H 2,74 m)
- » invisible cable duct integrated in the floor





The Forum Lower Ground Floor

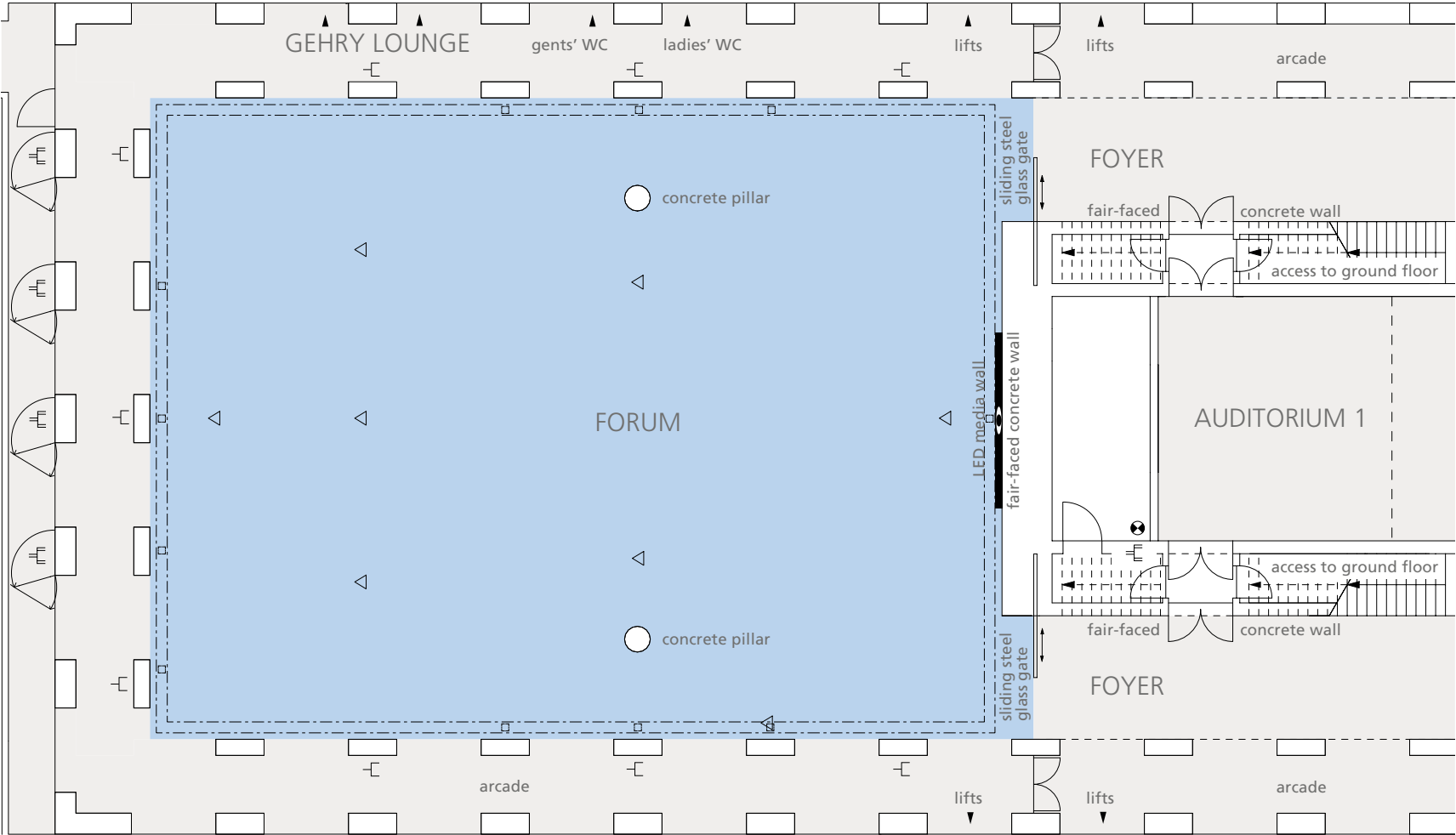
M 1:200

10

5

2,5

1 0,5



- power point
- 3-phase power point
- power, tel./data lines
- access ways TV and audio broadcasting system
- cable duct with port
- LED media wall W 6,10 x H 2,74 m

DIMENSIONS	
total area	530 m²
length	26,50 m
width	20,00 m
height	3,32 m – 5,58 m

SEATING CAPACITY		including podium (8 x 4 m)	
classroom		250 delegates	250 delegates
theatre		500 delegates	500 delegates
banquet		350 delegates	320 delegates
reception		500 delegates	500 delegates

The Foyer

Lower Ground Floor

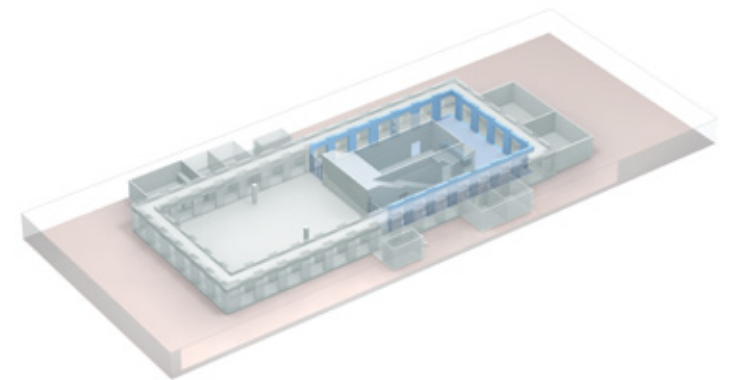


Event type

- » receptions
- » coffee breaks
- » exhibitions & product presentations
- » cocktail bar & lounge
- » dinner & meetings

Interior & Furnishing

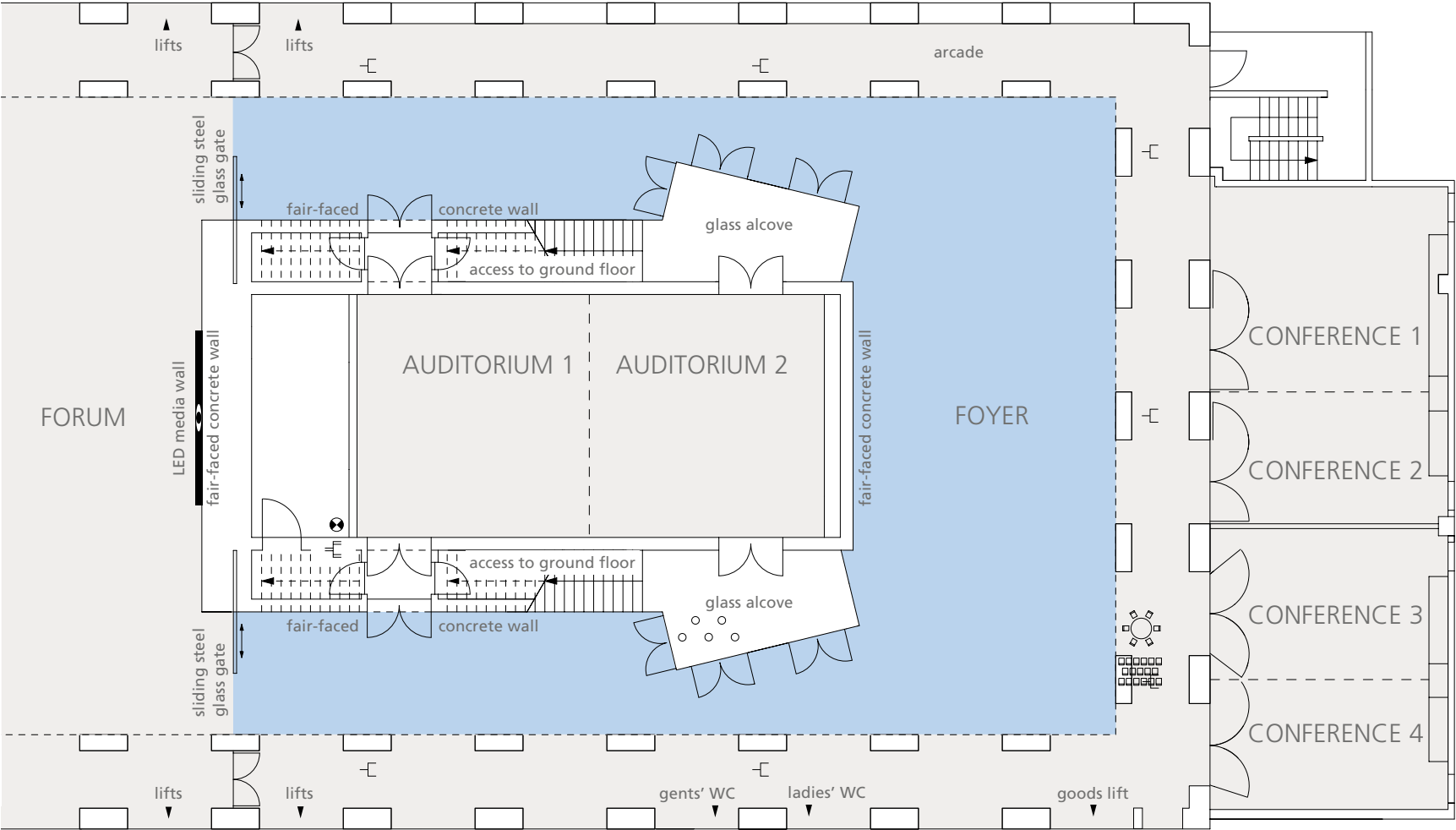
- » direct daylight
- » red carpet
- » arcade
- » access to all spaces
- » Wi-Fi





The Foyer Lower Ground Floor

M 1:200



	power point
	3-phase power point
	access ways TV and audio broadcasting system

DIMENSIONS		SEATING CAPACITY			
total area	200 m²	reception/buffet	250 delegates	banquet	80 delegates
		exhibition	depends on exhibition size	theater	84 delegates

The Auditorium

Lower Ground Floor



Event type

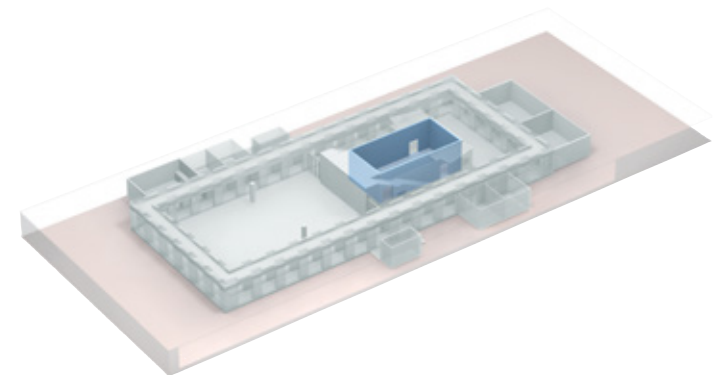
- » workshops
- » meetings
- » exhibitions & product presentations
- » additional service area
- » press conferences
- » lectures

Interior & Furnishing

- » flexible room concept; can be divided into two separate areas
- » indirect lighting
- » under-floor air-conditioning
- » red carpet

Technology & Equipment

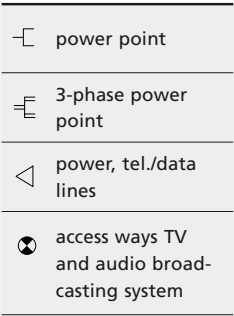
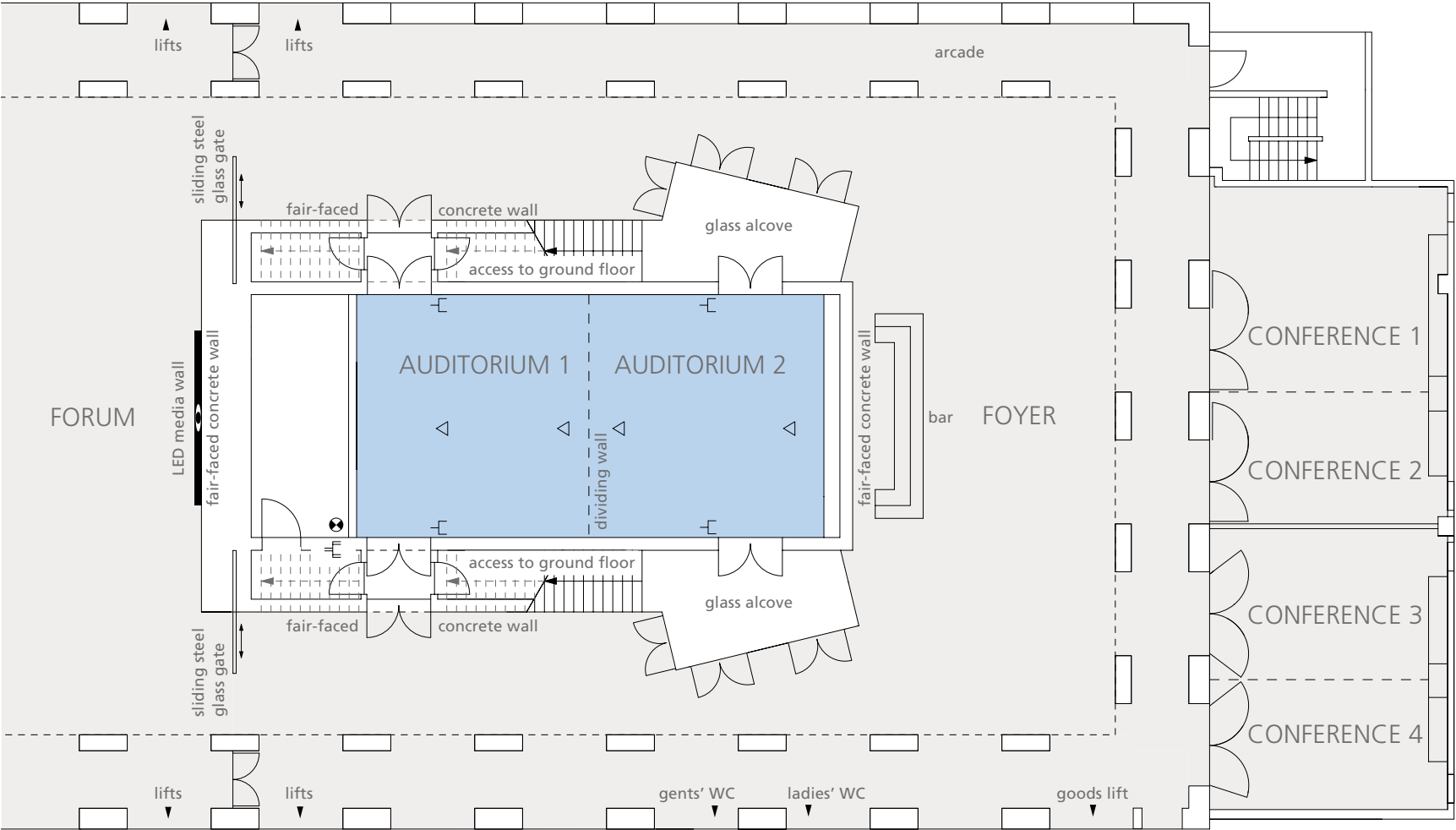
- » Wi-Fi
- » technical cooperation with event production experts









The Auditorium Lower Ground Floor

M 1:200



DIMENSIONS	Auditorium 1 & 2	Auditorium 1	Auditorium 2
total area	107,38 m²	53,36 m²	53,28 m²
length	14,55 m	7,22 m	7,20 m
width	7,38 m	7,38 m	7,38 m
height	4,55 m	4,55 m	4,55 m

SEATING CAPACITY	Auditorium 1 & 2	Auditorium 1	Auditorium 2
classroom 	60 delegates	20 delegates	20 delegates
boardroom 	30 delegates	16 delegates	16 delegates
theatre 	100 delegates	35 delegates	35 delegates
U-shape 	30 delegates	12 delegates	12 delegates

The Conferences

Lower Ground Floor



Event type

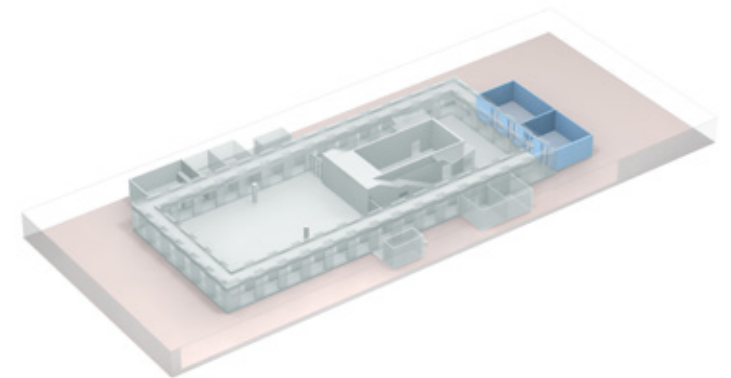
- » conferences
- » workshops
- » presentations
- » lounge
- » exhibitions
- » additional service area

Interior & Furnishing

- » indirect daylight
- » flexible room concept;
partition walls
- » red carpet

Technology & Equipment

- » Wi-Fi
- » floor cabled with power points
- » TV frequency links

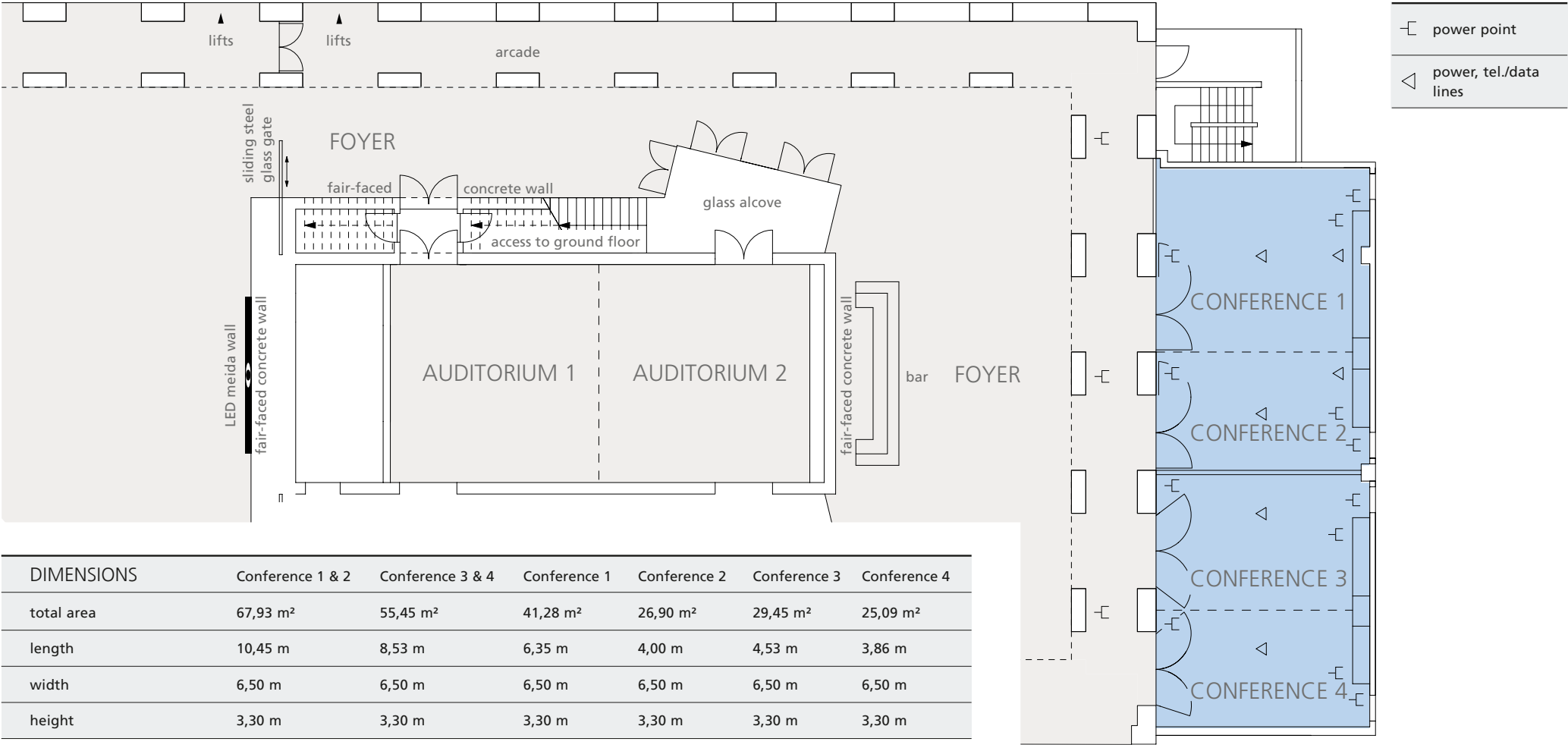







The Conferences

Lower Ground Floor

M 1:200



DIMENSIONS	Conference 1 & 2	Conference 3 & 4	Conference 1	Conference 2	Conference 3	Conference 4
total area	67,93 m²	55,45 m²	41,28 m²	26,90 m²	29,45 m²	25,09 m²
length	10,45 m	8,53 m	6,35 m	4,00 m	4,53 m	3,86 m
width	6,50 m	6,50 m	6,50 m	6,50 m	6,50 m	6,50 m
height	3,30 m	3,30 m	3,30 m	3,30 m	3,30 m	3,30 m

SEATING CAPACITY	Conference 1 & 2	Conference 3 & 4	Conference 1	Conference 2	Conference 3	Conference 4
classroom 	30 delegates	24 delegates	–	–	–	–
boardroom 	25 delegates	20 delegates	12 delegates	10 delegates	10 delegates	10 delegates
theatre 	55 delegates	40 delegates	–	–	–	–

The Gehry Lounge

Lower Ground Floor

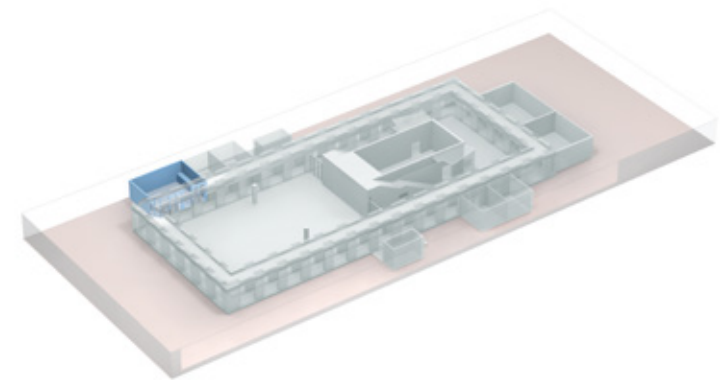


Event type

- » cocktail bar & lounge
- » receptions
- » coffee breaks
- » VIP lounge

Interior & Furnishing

- » wooden seating designed by Frank O. Gehry
- » fitted coffee and cocktail bar
- » parquet floor
- » LED screen 58"
- » Wi-Fi

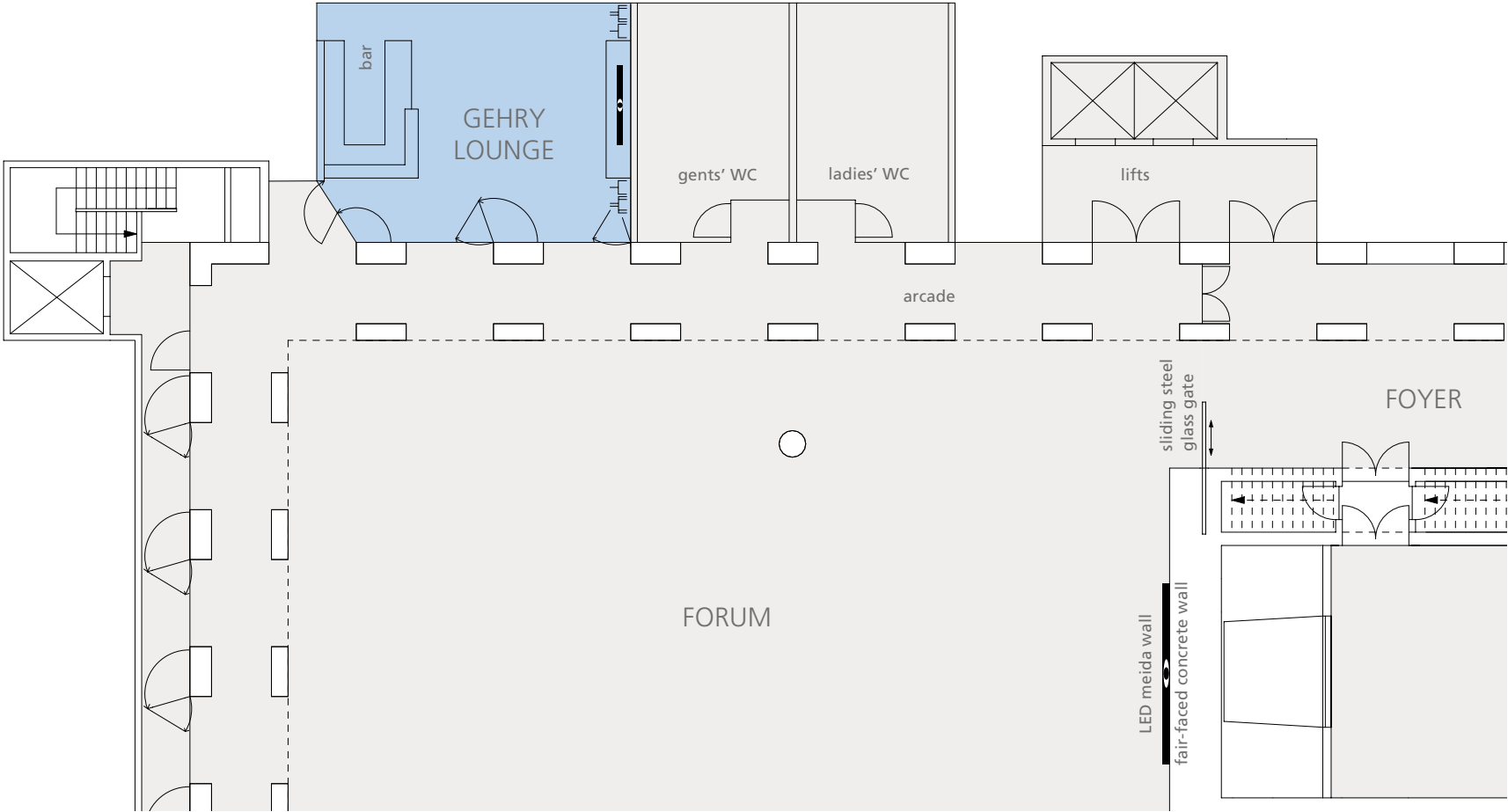




The Gehry Lounge

Lower Ground Floor

M 1:200



- power point
- 3-phase power point
- LED screen 58"

DIMENSIONS	
total area	70 m²
length	9,20 m
width	7,10 m
height	4,50 m

SEATING CAPACITY		
café seating		35 delegates
reception		35 delegates

The Gallery

with Boardroom and Quadriga room

First Floor



The Gallery

Event Type

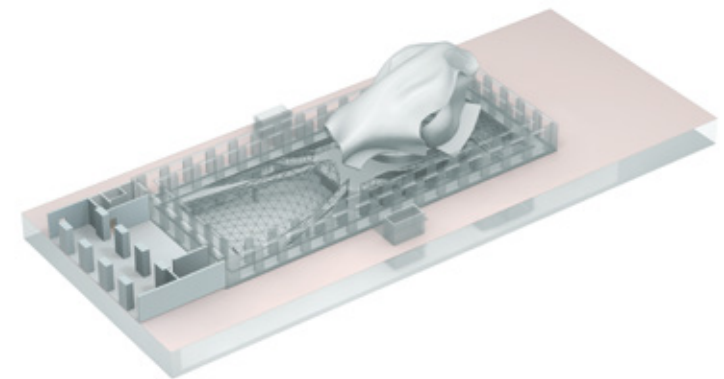
- » receptions

Interior & Furnishing

- » direct daylight
- » view to the Brandenburg Gate

Equipment & Service

- » 220V power connections
- » Wi-Fi
- » technical cooperation with event production experts



Boardroom and Quadriga room

Event Type

- » conferences
- » presentations
- » dinner
- » film set

Interior & Furnishing

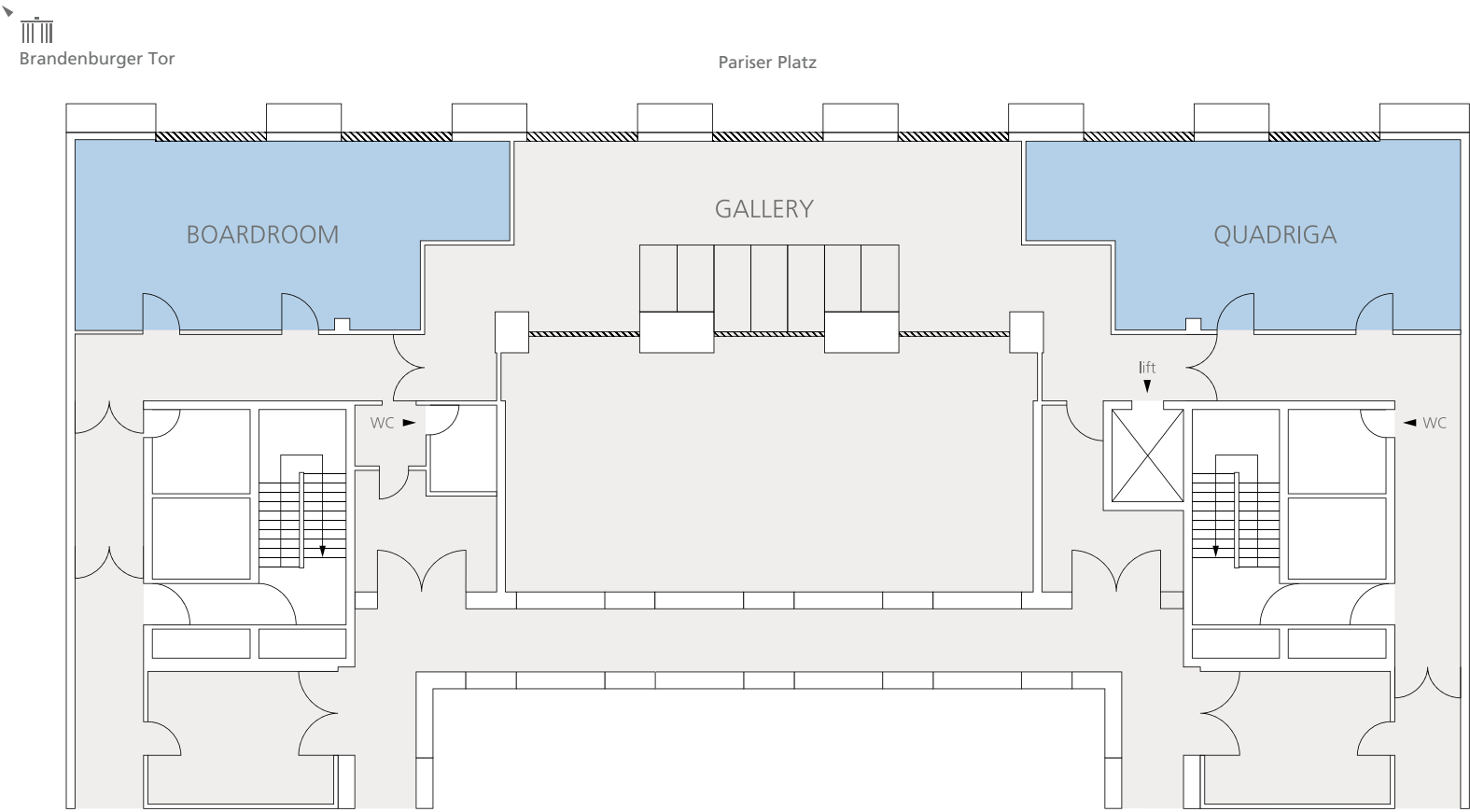
- » direct daylight
- » view to the Brandenburg Gate
- » fully air-conditioned and ventilated

Equipment & Service

- » 220V power connections
- » Wi-Fi
- » technical cooperation with event production experts



The Gallery with Boardroom and Quadriga room | First Floor



DIMENSIONS	Gallery	Quadriga	Boardroom
total area	75 m²	65 m²	65 m²
length	15 m	12,85 - 10,20 m	12,85 - 10,20 m
width	5 m	5,10 m	5,10 m
height	2,80 m	2,80 m	2,80 m

SEATING CAPACITY	Gallery	Quadriga	Boardroom
boardroom	-	26 delegates	26 delegates
theatre	-	45 delegates	45 delegates
dinner	-	27 delegates	27 delegates
reception	60 delegates	40 delegates	40 delegates

The Conferences 5 & 6

First Floor



Event type

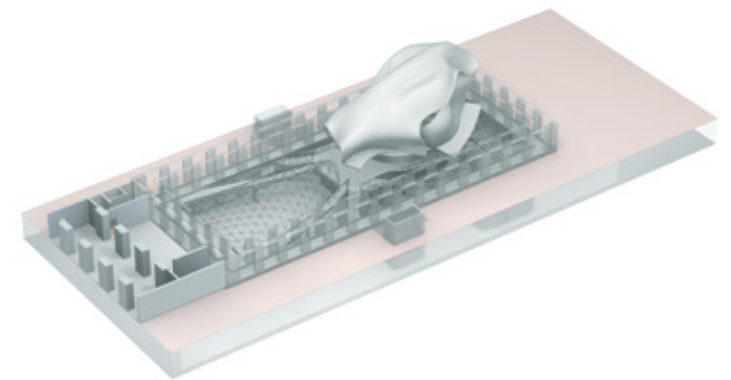
- » workshops
- » presentations
- » conferences
- » Lounge

Interior & Furnishing

- » indirect daylight
- » flexible room concept
- » partition wall
- » carpet

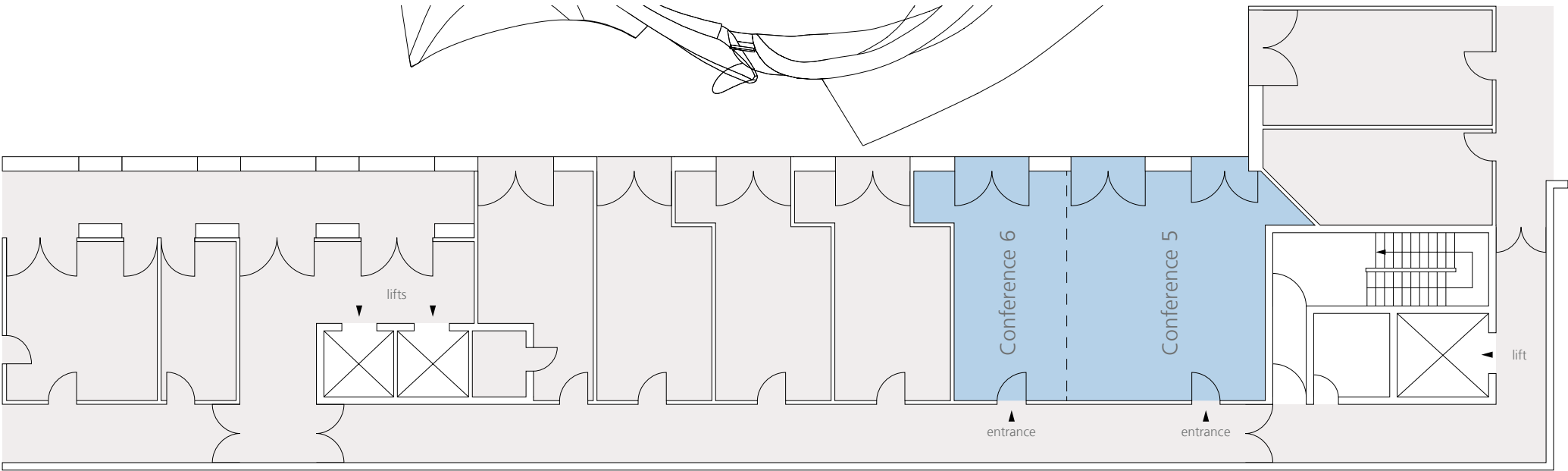
Equipment & Service

- » power connections 220V
- » Wi-Fi
- » technical cooperation with event production experts





The Conferences 5 & 6 First Floor



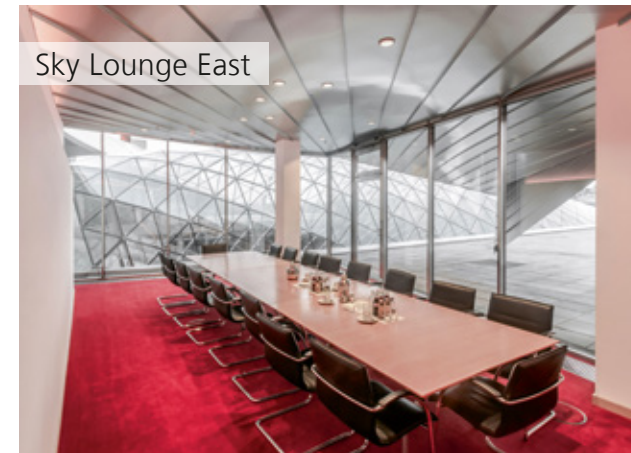
DIMENSIONS	Conference 5	Conference 6	Conference 5 & 6
total area	53 m²	33 m²	86 m²
length	6,75 m	4 m	10,85 m
width	5,50 m	5,50 m	5,50 m
height	2,80 m	2,80 m	2,80 m

SEATING CAPACITY	Conference 5	Conference 6	Conference 5 & 6
boardroom	18 delegates	12 delegates	30 delegates
theatre	35 delegates	20 delegates	70 delegates
U-shape	14-16 delegates	-	24 delegates
classroom	20 delegates	-	28 delegates

The Sky Lobby

With Sky Lounge West & East

Top Floor



Event type

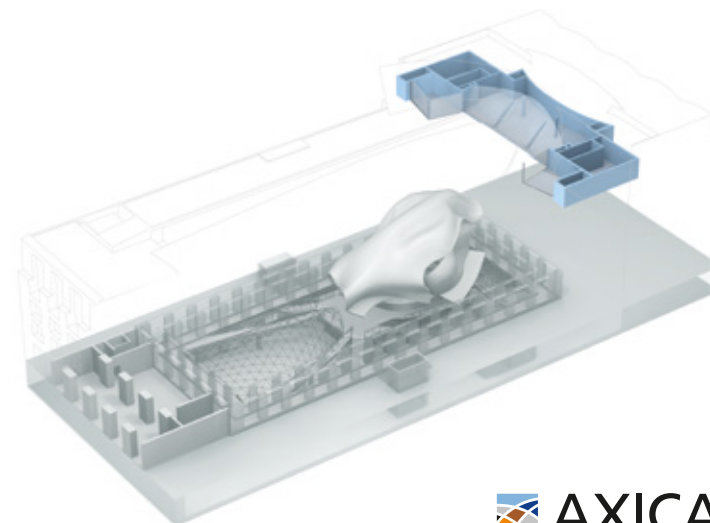
- » receptions
- » dinner
- » workshops
- » exhibitions
- » presentations
- » conferences
- » film set

Interior & Furnishing

- » open, expansive atmosphere on the 6th floor
- » direct daylight, glass front
- » view of the building's Atrium and the rooftops of Berlin
- » at eye-level with the Quadriga on the Brandenburg Gate and the dome of the Reichstag building
- » fully air-conditioned and ventilated
- » separate cloakroom and toilets

Technology & Equipment

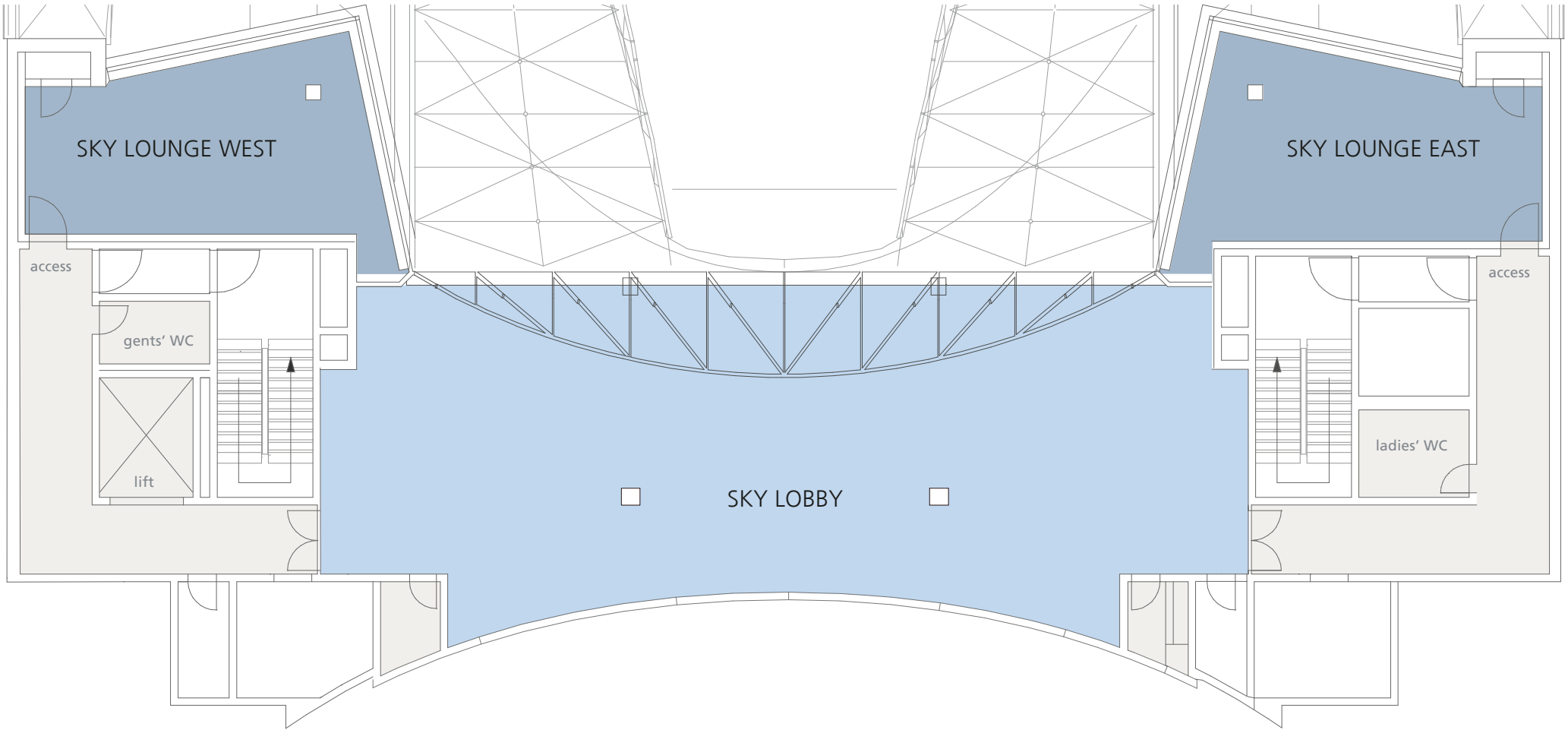
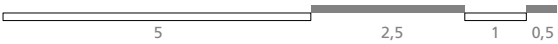
- » coloured interior lighting
- » powered adjustable spotlights
- » WiFi
- » power connections 220 + 380 V
- » technical cooperation with event production experts





The Sky Lobby With Sky Lounge West & East / Top Floor

M 1:120



DIMENSIONS SKY LOBBY	
total area	204 m²
length	24,80 m
width	8,14 - 9,65 m
height	4,35 - 5,59 m

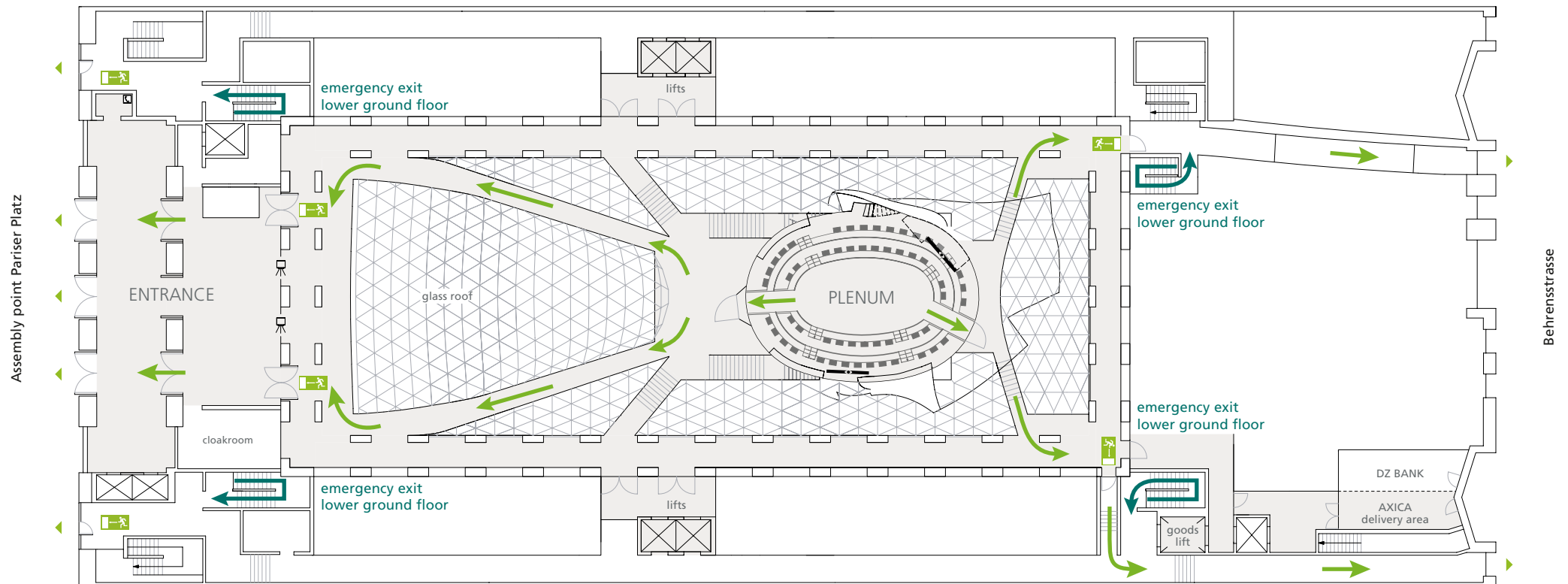
SEATING CAPACITY SKY LOBBY		
classroom		40 delegates
theatre		80 delegates
dinner/buffet		50 delegates
reception		80 delegates

DIMENSIONS SKY LOUNGE	
total area	46 m²
length	9,00 - 10,00 m
width	4,00 - 5,80 m
height	3,00 m

CAPACITY SKY LOUNGE		
boardroom		18 delegates
theatre		25 delegates
dinner		12 delegates
reception		20 delegates

Evacuation Plan

Ground Floor

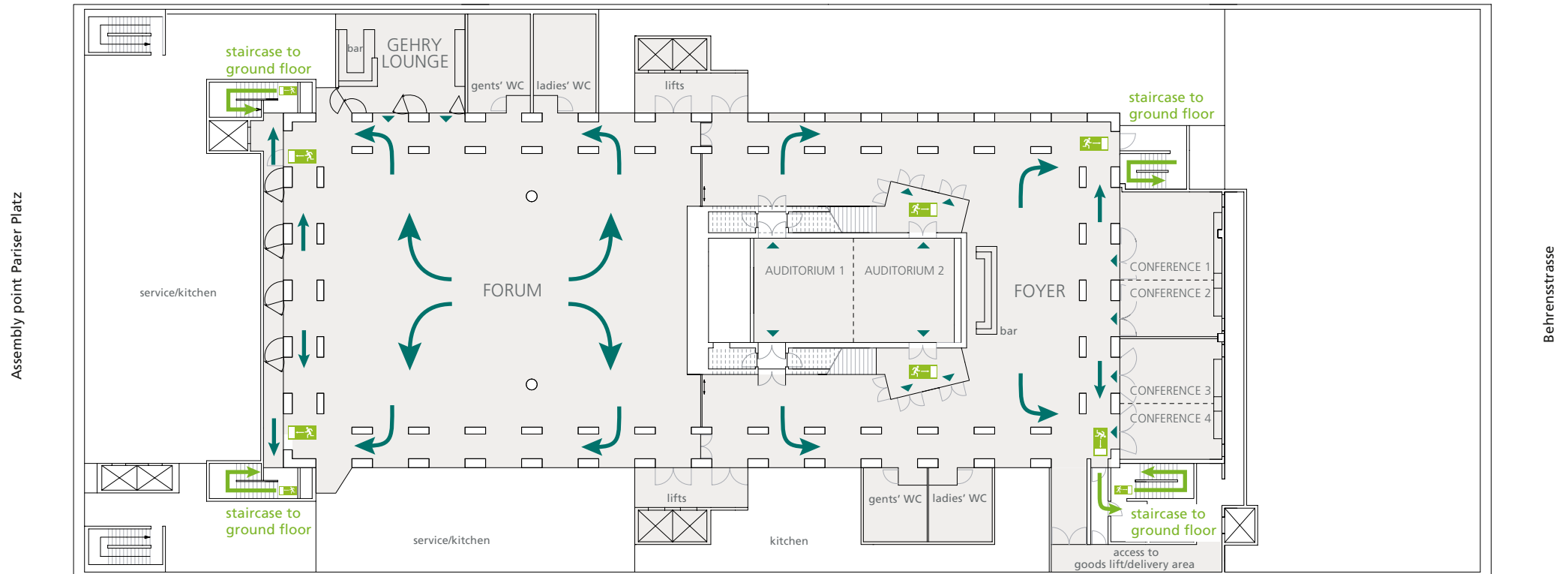


IN CASE OF EMERGENCY

- » Please remain calm.
- » Please evacuate the building via the designated emergency exits.
- » Pay attention to announcements.
- » Do not use lifts.
- » Proceed to the assembly point at Pariser Platz.
- » Await further instructions.

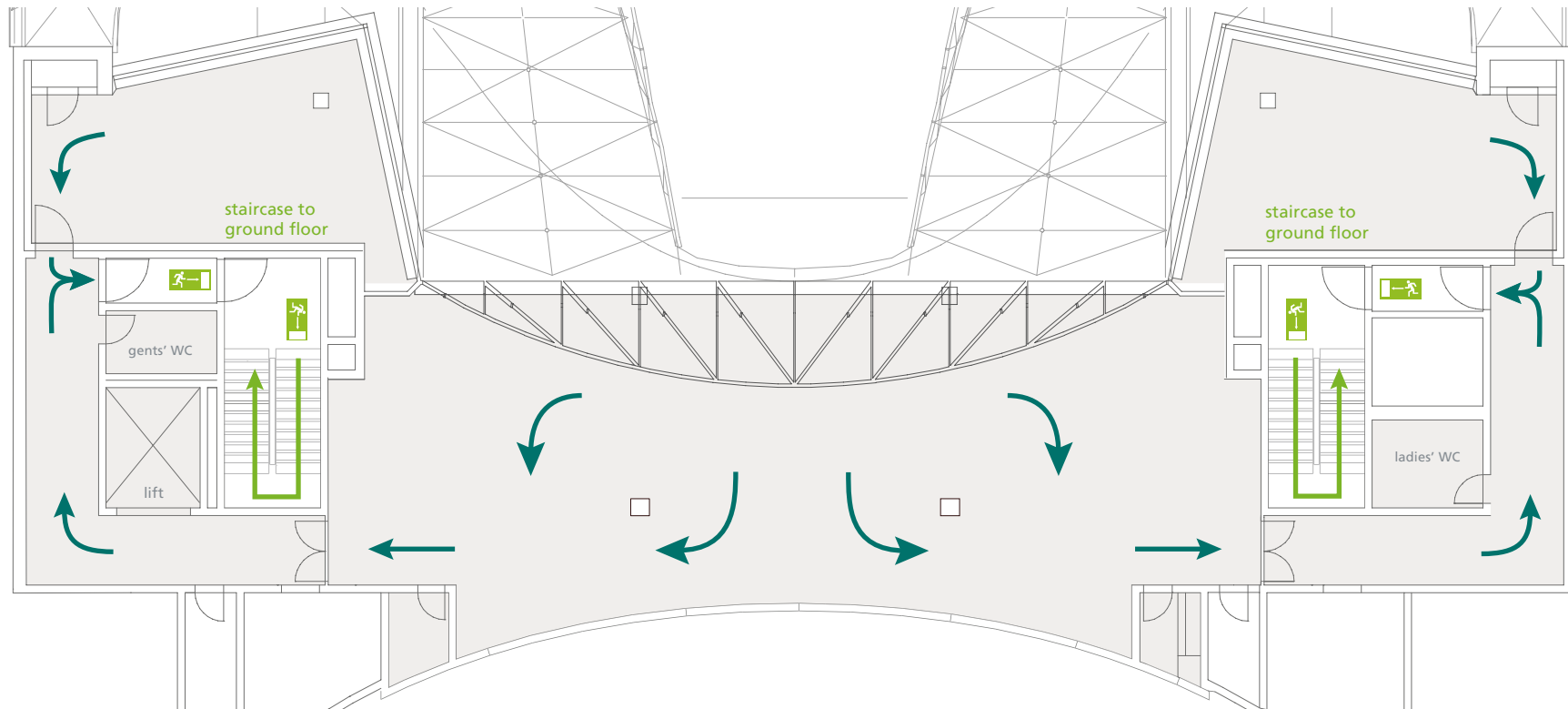
Evacuation Plan

Lower Ground Floor



Evacuation Plan

Sky Lobby



In case of emergency

- » Please remain calm.
- » Please evacuate the building via the designated emergency exits.
- » Pay attention to announcements.
- » Do not use lifts.
- » Proceed to the assembly point at Pariser Platz.
- » Await further instructions.