

# The Foyer

Lower Ground Floor

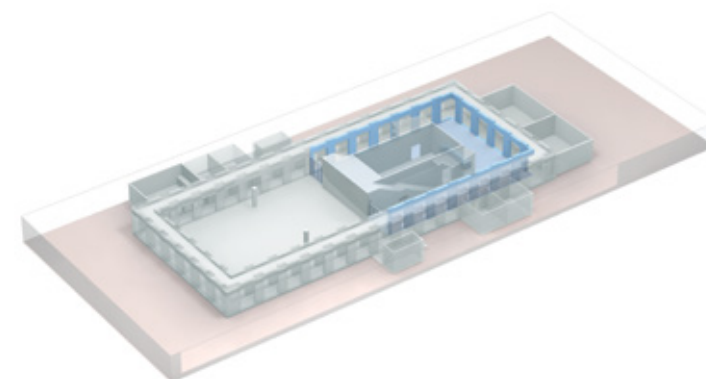


## Event type

- » receptions
- » coffee breaks
- » exhibitions & product presentations
- » cocktail bar & lounge
- » dinner & meetings

## Interior & Furnishing

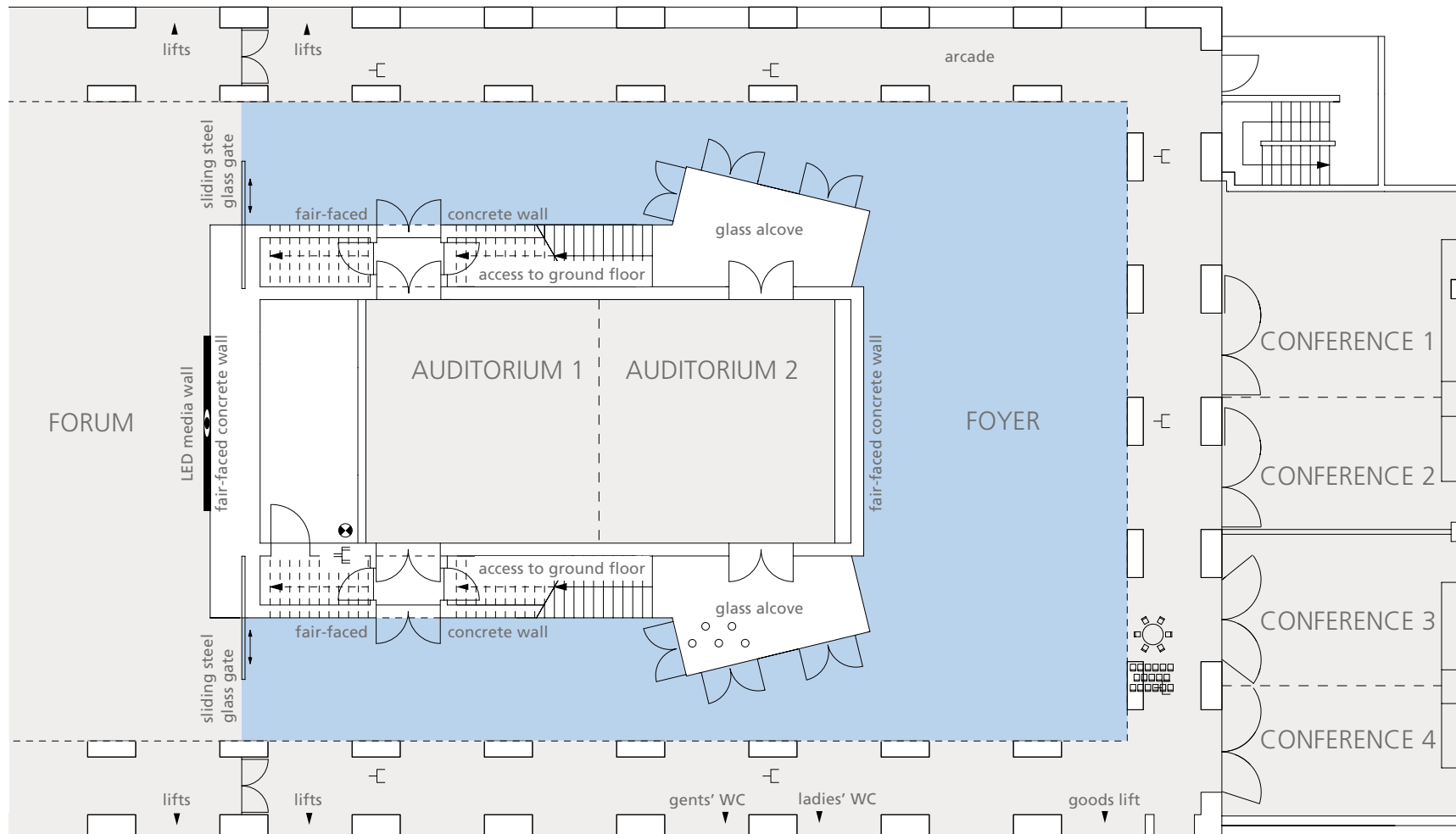
- » direct daylight
- » red carpet
- » arcade
- » access to all spaces
- » Wi-Fi

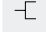
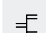





# The Foyer Lower Ground Floor



M 1:200



-  power point
-  3-phase power point
-  access ways TV and audio broadcasting system

DIMENSIONS	
total area	200 m <sup>2</sup>

SEATING CAPACITY	
reception/buffet	 250 delegates
exhibition	depends on exhibition size

banquet	 80 delegates
theater	 84 delegates