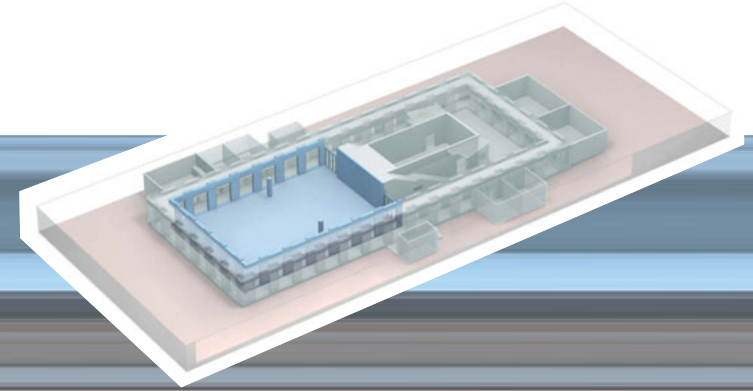


THE FORUM



EVENT TYPE

- receptions
- gala dinners
- congresses
- symposia
- conferences
- meetings
- presentations
- exhibitions

INTERIOR & FURNISHING

- direct daylight, glass roof
- red carpet
- glass art installation
- smooth-faced concrete wall (12 m wide and 5.58 m high)
- access to Foyer and Gehry Lounge
- designer furniture
- room cannot be darkened

TECHNOLOGY & EQUIPMENT

- concrete wall spanned with 3-cable system for suspension of media screens and banners (maximum weight 25 kg/cable)
- dimmable lighting
- TV frequency links
- access to WLAN
- 400V/32A power points
- technical management provided by axica
- technical cooperation with event production experts

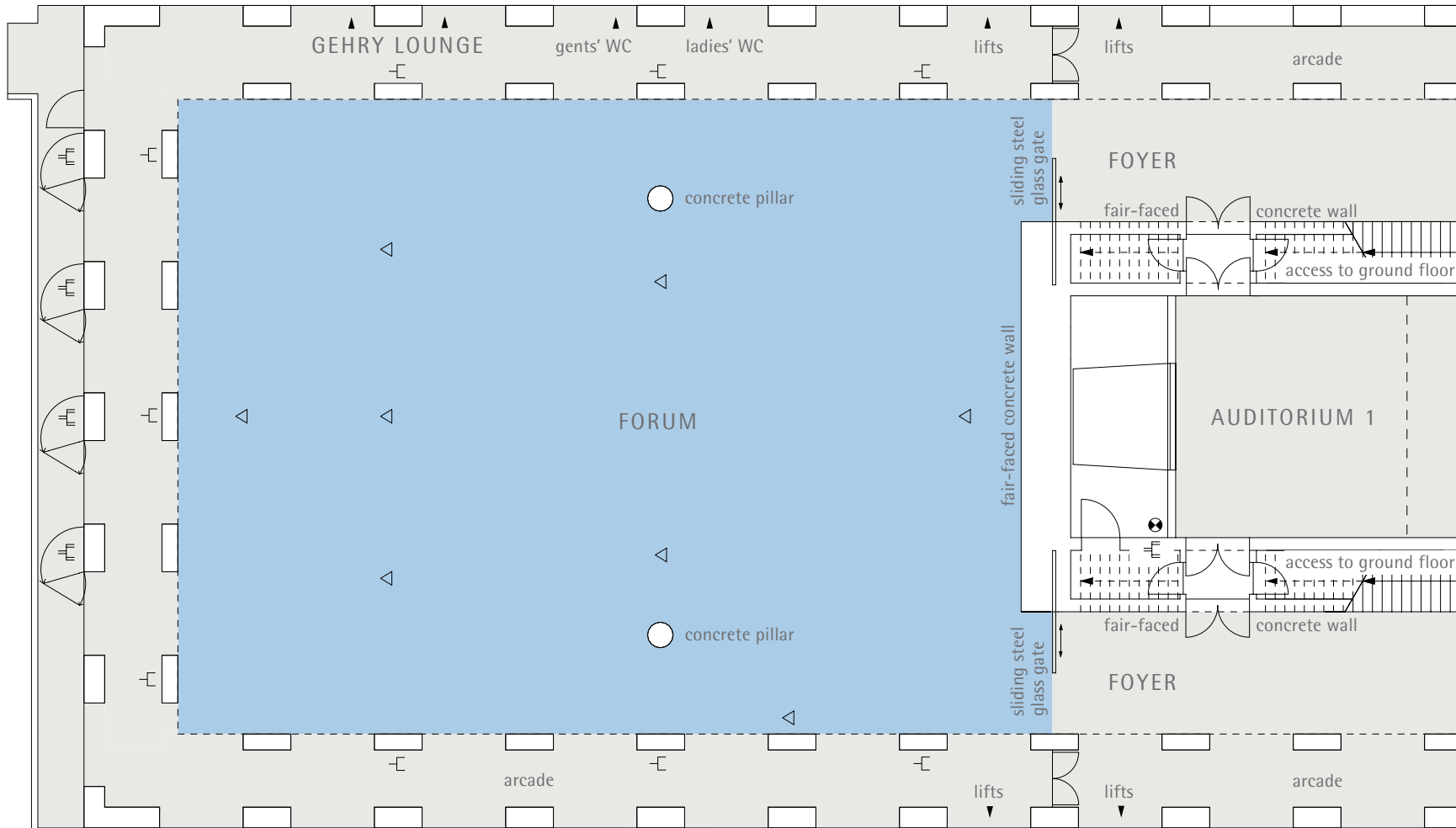
THE FORUM


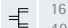
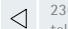

LOWER GROUND FLOOR




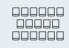


Scale 1:200

10 5 2,5 1 0,5



-  230V
-  16A, 32A, 400V power points
-  230V tel./data lines
-  access ways
TV and audio broadcasting system

DIMENSIONS	
total area	530 m ²
length	26,50 m
width	20,00 m
height	3,32 m – 5,58 m

SEATING CAPACITY		including podium (8 x 4 m)	
classroom		250 delegates	250 delegates
theatre		500 delegates	500 delegates
banquet		350 delegates	320 delegates
reception		600 delegates	600 delegates